



Spare Parts List

File: 0020100921ZA

Version: 1.0

Date: 9th Sep,2010

Petrol tiller ----TDS40 (Old model:TL40B)

Pos. No	Part code	Part Description	QTY	losable	damage-able	Consum-able	FOB Unit Price (USD)	Remark
1	921200	pin & clip	2	Y				
2	921201R9005	tiller assy	2			Y		
3	B124009W014	Hexagon head bolts M8x30	3					
4	B500007W014	Single coil spring lock washers 8	13					
5	B501008W014	Plain washers 8	13					
6	B701403W014	woodruff key 4x6.5x16	2					
7	921203R9005	draw bar	1			Y		
8	921204	pins& clamp spring	1					
9	921900	cable-belt tension	1					
10	921300	soft grip	2					
11	921205R9005	right handle bar	1					
12	921206	pin 6	1					
13	921004R3000	control lever	1					
14	B400068FW014	Cross recessed pan head tapping screws ST4.2x12	2					
15	921001R3000	face plate	1					
16	921207R9005	left handle bar	1					
17	B217004W014	Prevailing torque type hexagon nuts M6	11					
18	B501007W014	Plain washers 6	2					
19	921002R3000	throttle lever	1					
20	B124006W014	Hexagon head bolts M6x40	1					
21	921901	cable-throttle control	1					
22	921208	washer 8.5x30x3	5					
23	B124009W014	Hexagon head bolts M8x30	6					
24	B217005W014	Prevailing torque type hexagon nuts M8	9					
25	B131002W014	Hexagon flange bolts M6x16	1					
26	921209R3000	handle bar support	1					
27	B124008W014	Hexagon head bolts M8x20	6					
28	921902	tie	2					
29	921003	tension pulley	1					
30	921210	sleeve	1					
31	921211	lever-tension pulley	1					
32	921212	pivot-pulley lever	1					
33	921500	spring-pulley lever	1					
34	921213R3000	guard	1					
35	921501	spring-wheel	1					
36	921214	pivot-wheel	1					
37	921301	wheel	1			Y		
38	921215	washer 14.2x20x0.4	2					

39	921216R3000	wheel arm	1				
40	B501009W014	Plain washers 10	1				
41	B124011W014	Hexagon head bolts M10x70	1				
42	B217006W014	Prevailing torque type hexagon nuts M10	2				
43	921217R3000	main plate	1				
44	B131003W014	Hexagon flange bolts M5x8	2				
45	921218R3000	front cover	1				
46	921219	bolt 3/8-24UNFx25	1				
47	B500008W014	Single coil spring lock washers 10	1				
48	921220	washer D10/30	2				
49	921221	driving pulley	1				
50	921222	top plate	2				
51	921223R9005	engine plate	1				
52	921224	boss of driven pulley	1				
53	921302	"V"belt Z729	1		Y		
54	921225	driven pulley	1				
55	B131004W014	Hexagon flange bolts M6x14	8				
56	B131005W014	Hexagon flange bolts M8x35	3				
57	00919ZA	engine assy	1				Engine:118cc
58	921903	warning label	1				
59	921904	label-belt tension	1				
60	921905	label-throttle control	1				
61	921100	gear cases assy	1				assembly 80~98,3,4,5,6
80	921101	gear cases sets	1				
81	921907	oil seal 20x32x6	3				
82	B700464W014	Deep groove ball bearing 6204-2RS	1				
83	921226	worm	1				
84	B700465W014	Tapered roller bearing 30203	1				
85	B700463W014	Deep groove ball bearing 6004	2				
86	B278018W014	Circlips for shaft 20	2				
87	921227	worm wheel	1				
88	921906	gasket-gear case	1				
89	921228	washer 10x16x1 -aluminium	2				
90	921229	bolt G1/8x8mm	2				
91	B217004W014	Prevailing torque type hexagon nuts M6	8				
92	B304038W014	Hexagon socket head cap screws M6x38	2				
93	B304037W014	Hexagon socket head cap screws M6x28	6				
94	921230	tiller shaft	1				
95	B701404W014	woodruff key 5x7.5x19	1				
96	921231	flat washer 20.5x35x0.3	2				
97	B524006W014	Serrated lock washers external teeth 6	8				
98	921232	cover-oil seal	2				

REMARKS:

1. The above quotations are based on RMB/USD=6.7280.
If RMB value increase over 5%, the prices should be adjustable.
2. If main material fluctuated more than 5%, the prices should be adjustable
3. Prices normally valid for one year from the day we offer, except the case we consider it invalid.
4. All prices should be subject to our final confirmation.



EXPLOSIVE L

Petrol tiller ----TDS40 (

File: 0020100921ZA

Version: 1.0

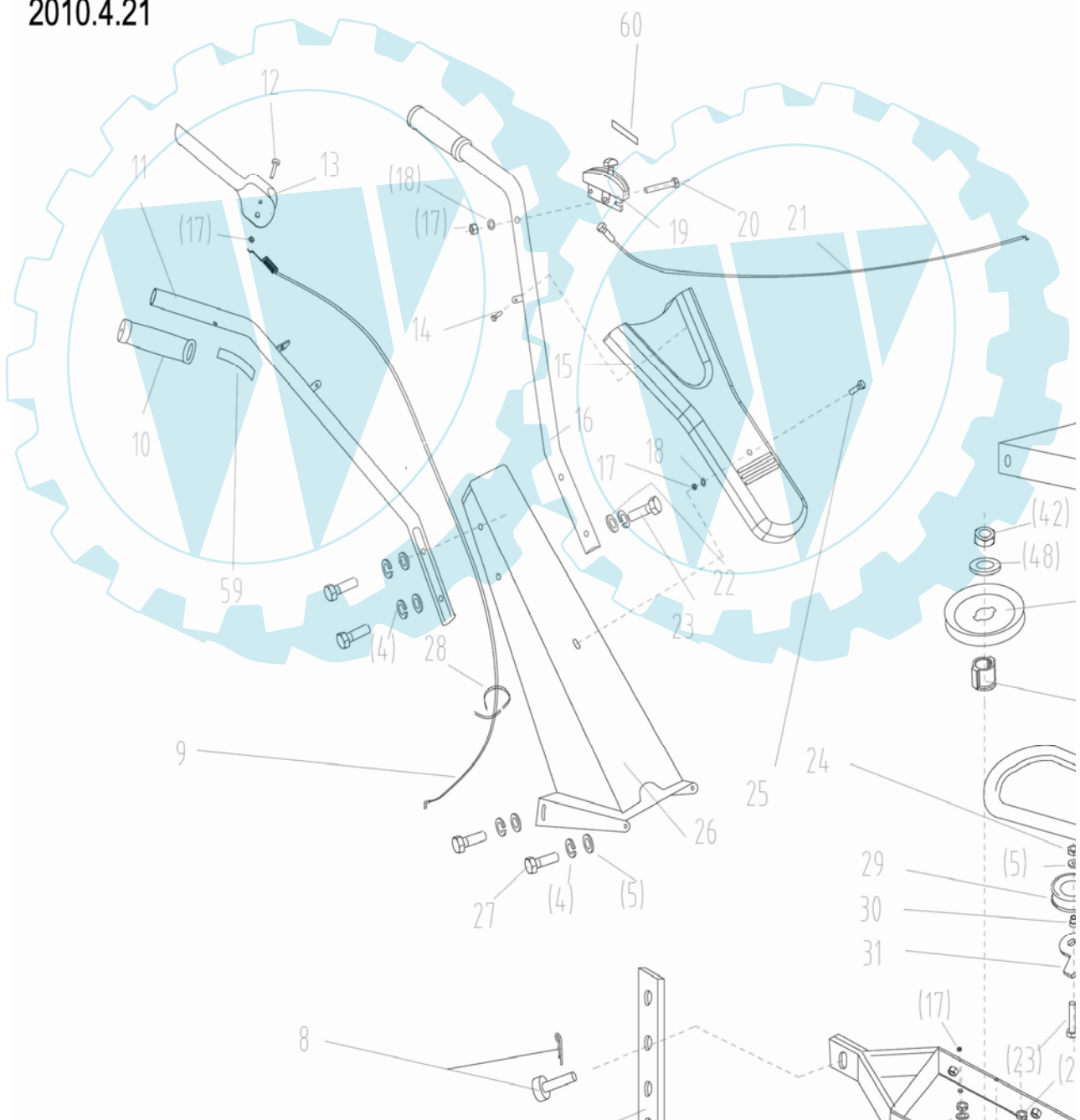
Model: TDS40&TDS40A

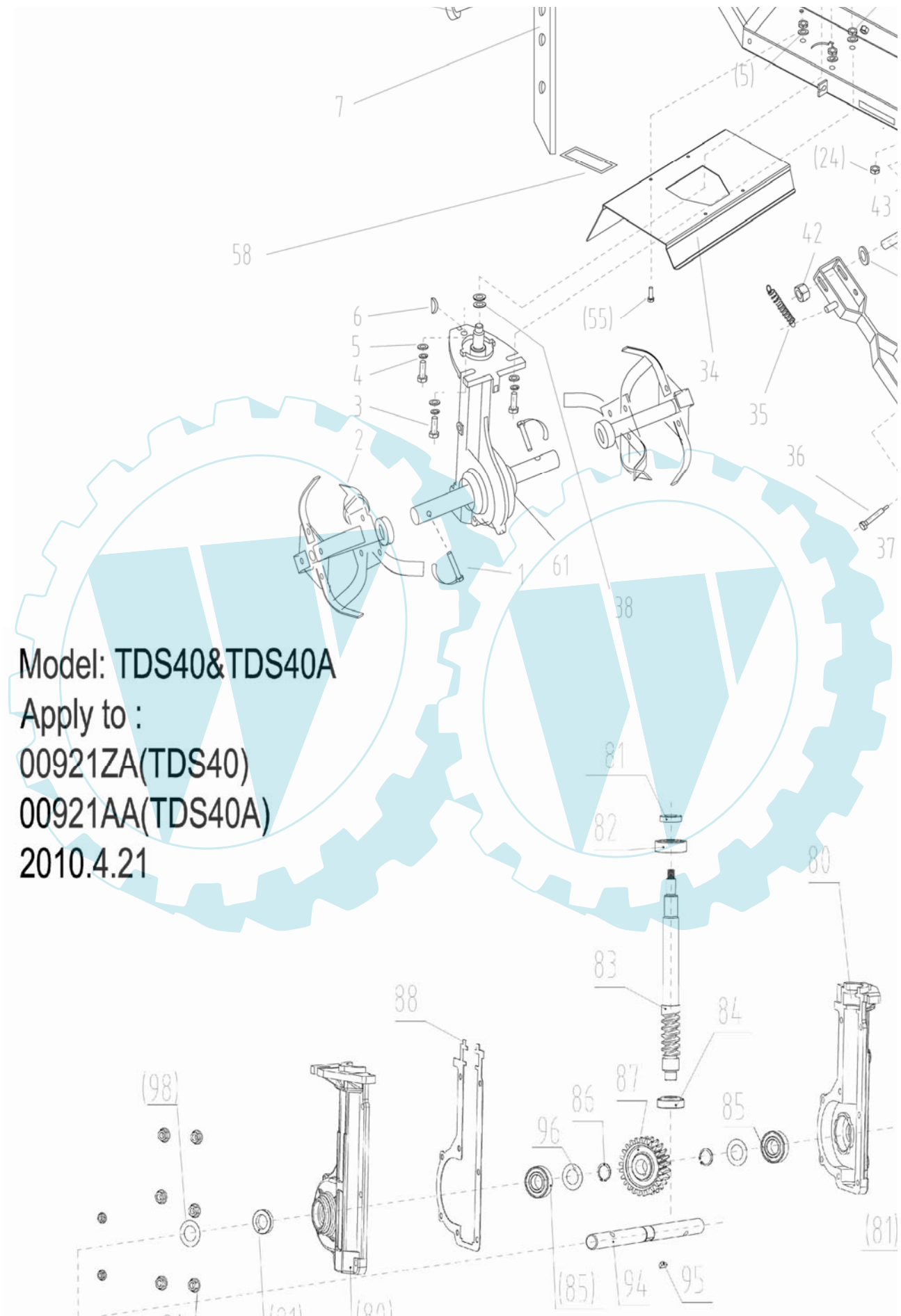
Apply to :

00921ZA(TDS40)

00921AA(TDS40A)

2010.4.21





Model: TDS40&TDS40A

Apply to :

00921ZA(TDS40)

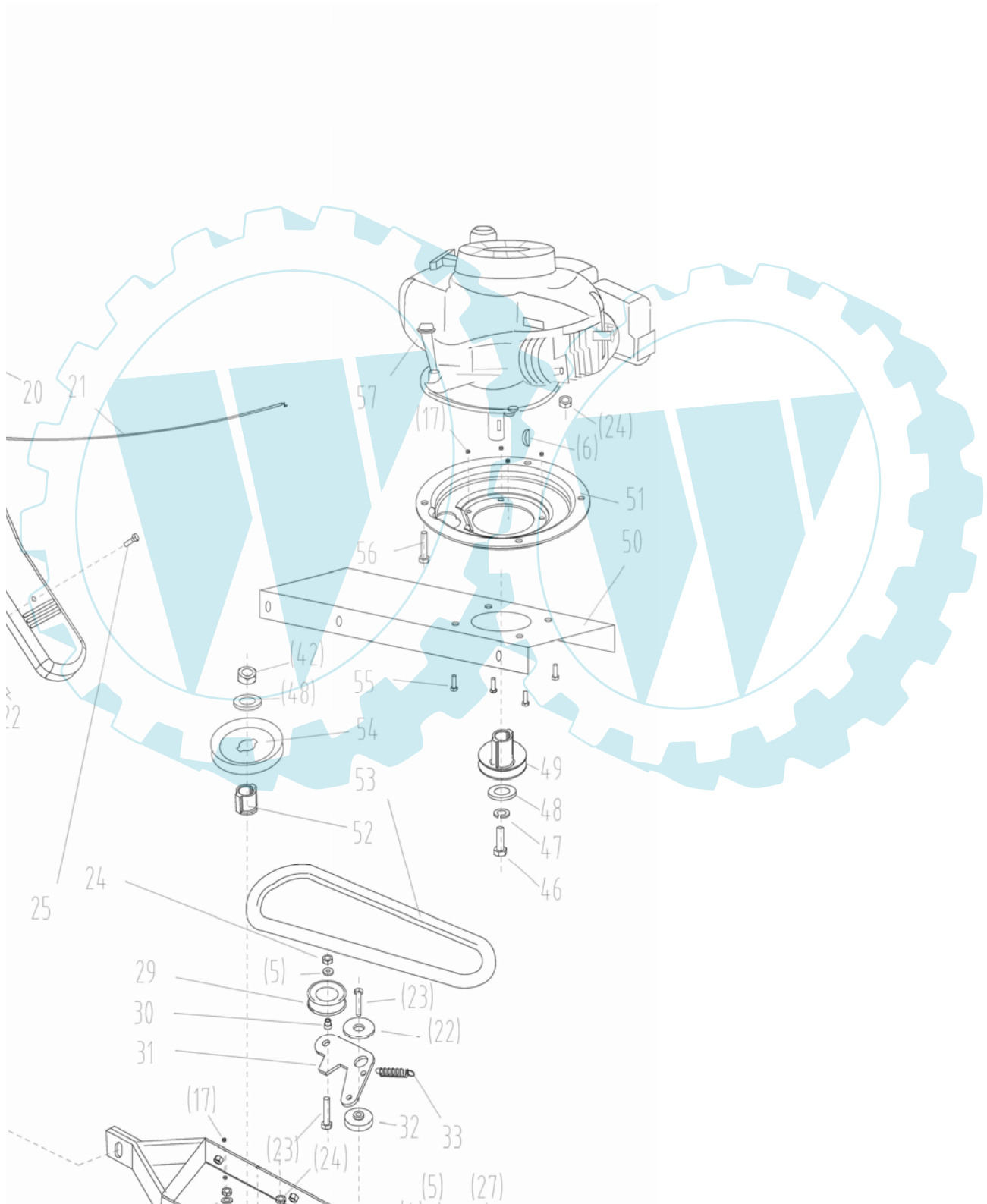
00921AA(TDS40A)

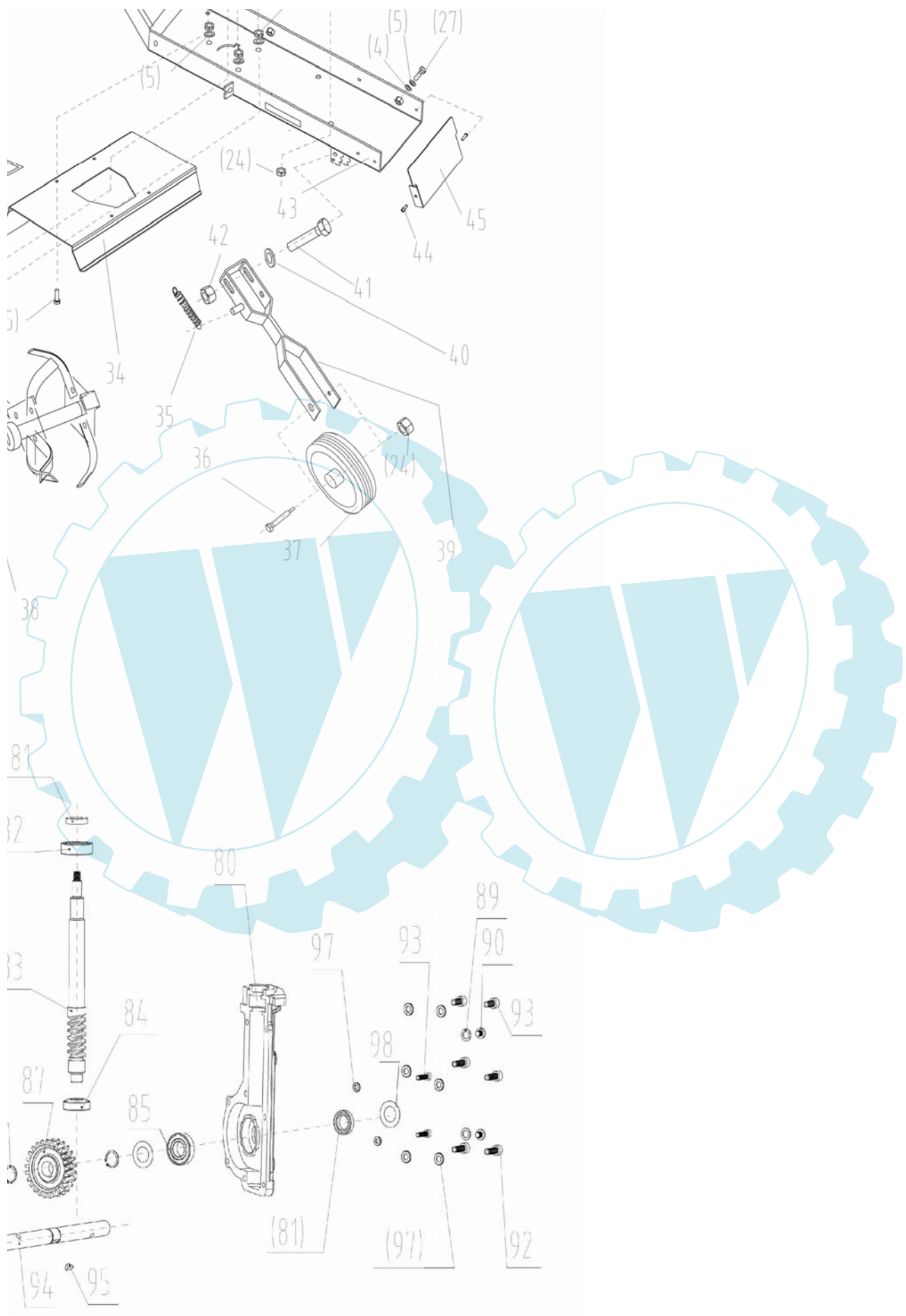
2010.4.21

DRAWING

Old model: TL40B)

Date: 9th Sep,2010







Spare Parts List

Engine-SP160FV(for TDS40)

Pos. No	Part code	Part Description	QTY	losable	damage-able	Consum-able	FOB Unit Price (USD)	Remark
1	B131014W012	Hexagon flange bolts M6x30	5					
2	B131008W012	Hexagon flange bolts M6x25	2					
3	919307	oil seal 25x38x6	1					
4	919100	cover-crankcase	1					
5	919200	pin	2					
6	919201	clamp	1					
7	B131001W012	Hexagon flange boltss M6x12	1					
8	919202	governor gear	1					
9	919900	gasket-cover	1					
10	919203	camshaft assy	1					
11	919204	tappet	2					
12	919205	drive gear	1					
13	919206	crankshaft	1					
14	919101	cover-connecting rod	1					
15	919207	screw	2					
16	B701403W012	woodruff key 4x6.5x16	1	Y				
17	919500	spring	2					
18	919208	board	1					
19	919209	board-governor system	1					
20	B131019W012	Hexagon flange bolts M6x35	1	Y				
21	B131008W012	Hexagon flange bolts M6x25	1	Y				
22	919210	clamp	1	Y				
23	B320038W012	Cross recessed pan head screws M6x25	1					
24	919300	vent pipe	2					
25	919211	support boss A	1					
26	919212	governor lever	1					
27	919309	oil seal 6x11x4	1					
28	B509007W012	Plain washers 6	1	Y				
29	919501	retainer ring	1					
30	919213	square neck bolt	1					
31	B228001W012	Hexagon nuts with flange M6	1					
32	919301	fuel pipe	1					

33	919214	clip b-fuel pipe	1				
34	919901	fuel filter	1				
35	919001	fuel tank	1				
36	919215	screw	1	Y			
37	919216	cushion	1	Y			
38	919302	dumping cushion	2	Y			
39	919002	cap assy-fuel tank	1				
40	919217	governor rocker	1				
41	919218	fuel tank support	1				
42	B131001W012	Hexagon flange bolts M6x12	2				
43	919902	filter	1				
44	919903	gasket	1				
45	919904	respirometer clapboard	1				
46	919219	respirometer cover assy	1				
47	B131001W012	Hexagon flange bolts M6X12	2	Y			
48	919220	flywheel assy	1				
49	919003	fan	1				
50	919221	starting bowl	1				
51	919222	flywheel nut	1				
52	B131006W012	Hexagon flange bolts M6X10	1				
53	919004	air director	1		Y		
54	919223	starter	1		Y		
55	B131013W012	Hexagon flange bolts M6X8	4	Y			
56	B320033W012	Cross recessed pan head screws M4X12	1	Y			
57	919700	switch	1				
58	B131001W012	Hexagon flange bolts M6X12	1				
59	B131008W012	Hexagon flange bolts M6X25	1				
60	919224	brake equip assy	1				
61	B131006W012	Hexagon flange bolts M6X10	1				
62	919308	oil seal 22X35X6	1				
63	B700466W012	Deep groove ball bearing 6205/DF	1				
64	B131008W012	Hexagon flange bolts M6X25	2				
65	919701	ignition coil	1				
66	B228001W012	Hexagon nuts with flange 6	2				
67	919005	case comp.	1				
68	919905	filter element assy	1			Y	
69	919303	packing	2				
70	919006	cover	1		Y		
71	919225	nut	2				
72	919906	washer	1				
73	919226	muffler assy	1				
74	919227	muffler protection	1				
75	B228001W012	Hexagon nuts with flange M6	2				
76	B131001W012	Hexagon flange bolts M6X12	2				
77	B131002W012	Hexagon flange bolts M6X16	2				
78	919228	cylinder head cover	1				
79	919304	gasket	1				
80	919229	nuts	2				
81	919230	rocker fixing nut	2				
82	919231	rockers	2				
83	919232	rocker fixing bolts	2				
84	919233	valve spring keepers	2				
85	919502	valve spring	2				
86	919234	push rod holder	1				

87	919235	push rod	2				
88	B131016W012	Hexagon flange bolts M8X45	4				
89	919102	cylinder head	1				
90	919236	intake valve	1				
91	919237	exhaust valve	1				
92	919238	parallels pins	2				
93	919907	gasket	1				
94	919103	cylinder assy	1				
95	919908	carburetor gasket	1				
96	919909	carburetor gasket	1				
97	919910	carburetor gasket	1				
98	919911	carburetor assy	1				
99	919912	gasket	1				
100	919239	stud bolt	2				
101	919240	chock lever	1				
102	919503	governor spring	1				
103	919504	lever	1				
104	919241	piston ring set	1				
105	919242	piston assy	1				
106	919244	piston kit	1				
107	919245	piston	1				
108	919505	clip	2				
109	919246	piston pin	1				
110	919007	oil deep stick	1				
111	919104	connecting rod	1				
112	919247	cushion	1				
113	B131015W012	Hexagon flange bolts M6X45	1				
114	919305	o ring	1				
115	919008	oil deep stick kit	1				
116	919306	o ring	1				
117	919248	oil drain plug A	1				
118	919249	oil drain plug B	1				
119	919506	fuel pipe clip	1				
120	919250	support dowel B	1				
121	919251	bolt	2				
122	919507	fuel line clip A	1				
123	919702	flameout wire	1				
124	919009	air filter assy.	1				
125	919703	spark plug F6RTC	1		Y		F6RTC
126	919105	connection rod assy	1				



EXPLOSIVE DRAWING

Petrol tiller ----Engine

