

0 600 825 103

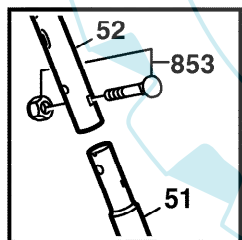
Stand } 99-01  
 Issue } 01-05-15

**Fig./Abb. 1**

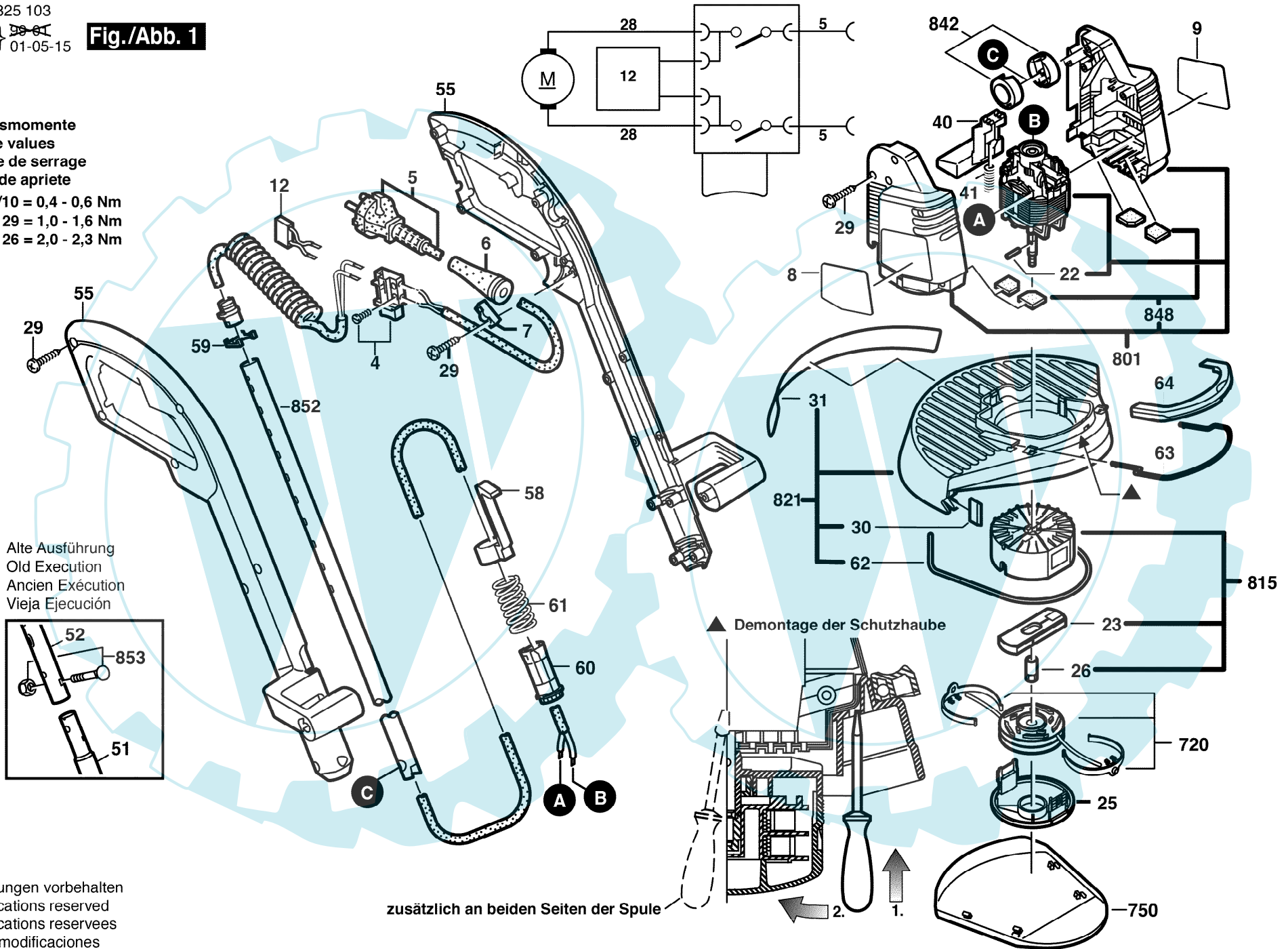
Anzugsmomente  
 Torque values  
 Couple de serrage  
 Pares de apriete

Pos. 4/10 = 0,4 - 0,6 Nm  
 29 = 1,0 - 1,6 Nm  
 26 = 2,0 - 2,3 Nm

Alte Ausführung  
 Old Execution  
 Ancien Exécution  
 Vieja Ejecución



Änderungen vorbehalten  
 Modifications reserved  
 Modifications reserves  
 Salvo modificaciones



zusätzlich an beiden Seiten der Spule