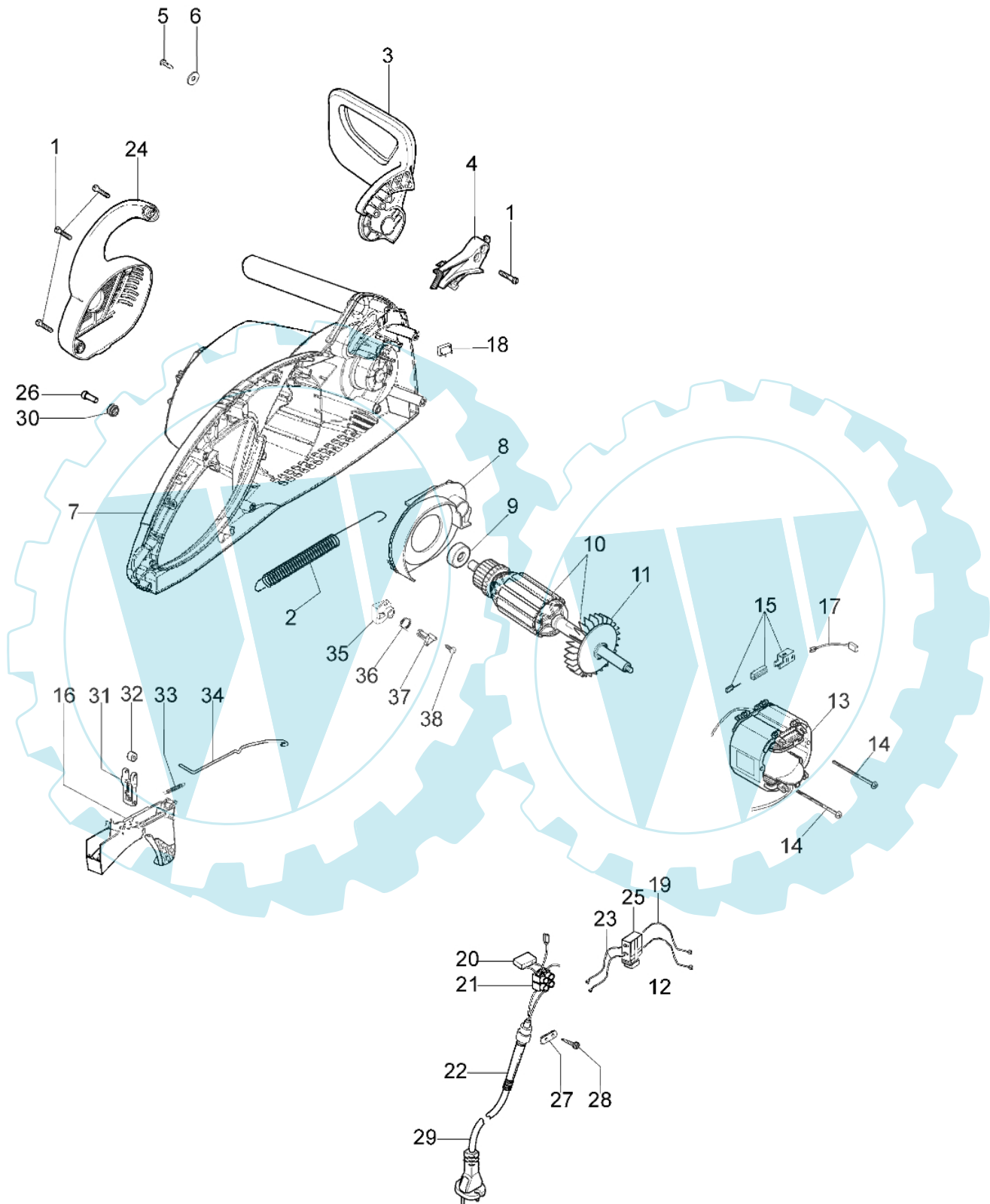
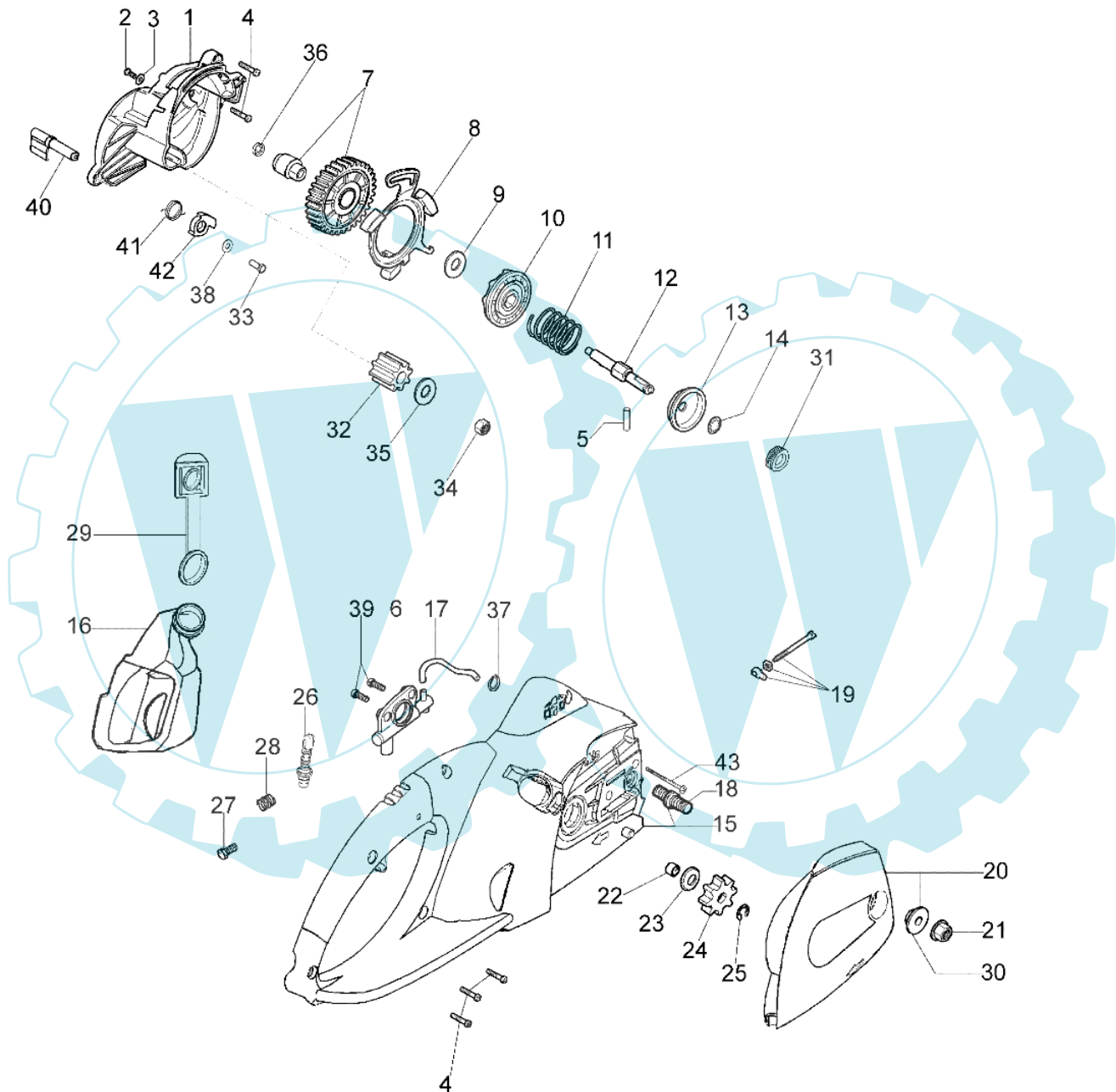


OM 2000 E - Motor



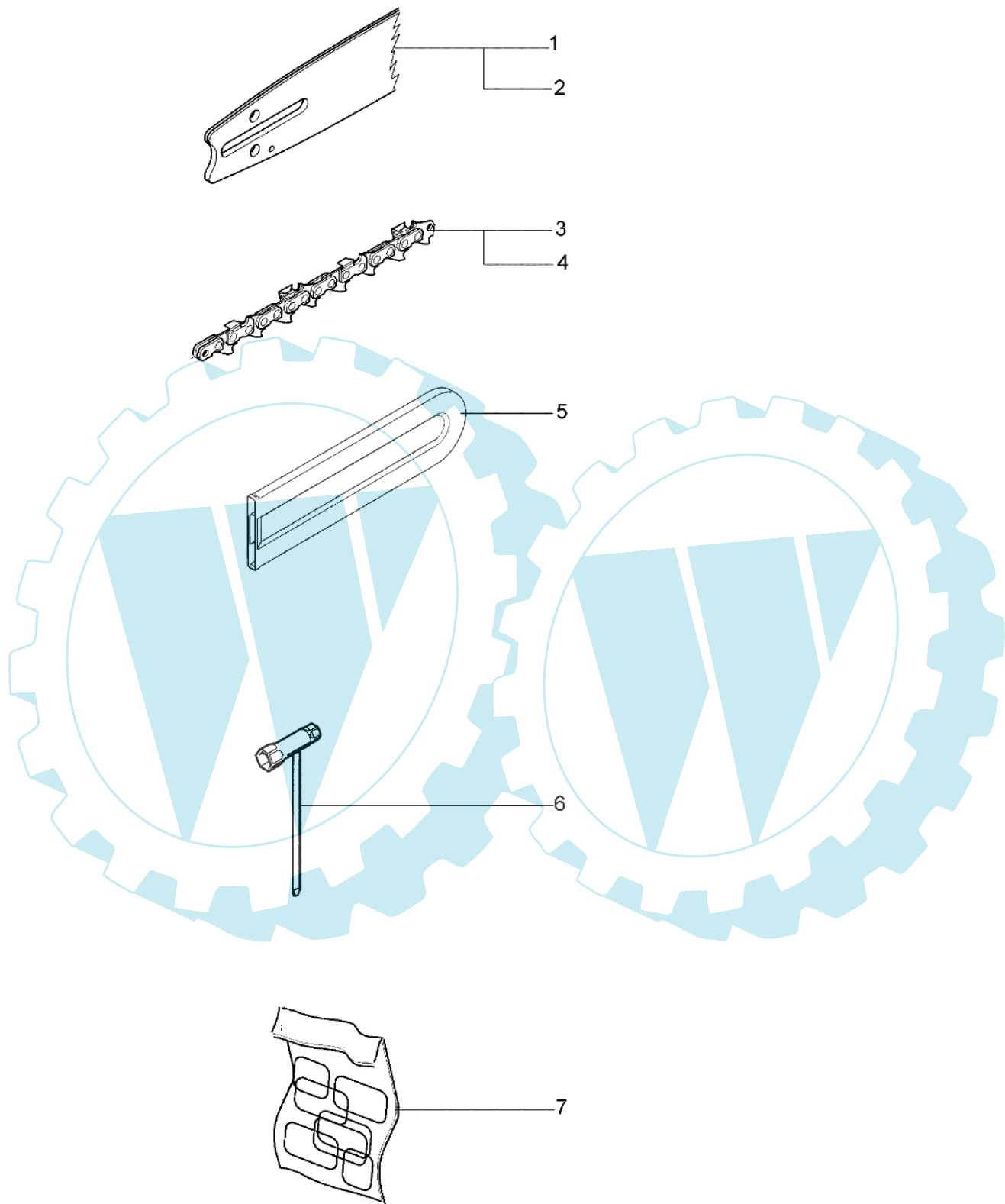
| Bild Nr. | Anz. | Teilenummer | Beschreibung | Technische Nachricht |
|----------|------|-------------|---------------|----------------------|
| 1 | 15 | 3960057R | Schraube | |
| 2 | 1 | 51020032R | Feder | |
| 3 | 1 | 51020052R | Schultz | |
| 4 | 1 | 51020050R | Hebel | |
| 5 | 1 | 3960084 | Schraube | |
| 6 | 1 | 3918018 | Scheibe | |
| 7 | 1 | 51020002R | Gehäuse motor | |
| 8 | 1 | 51020035R | Flansch | |
| 9 | 1 | 3035003 | Lager | |
| 10 | 1 | 51020011R | Roto | |
| 11 | 1 | 51020015R | Lufferrad | |
| 12 | 1 | 51020041R | Kabel | |
| 13 | 1 | 51020048R | Stator | |
| 14 | 2 | 3960036 | Schraube | |
| 15 | 1 | 51020104R | Burste kpl. | |
| 16 | 1 | 51020051R | Gashebel | |
| 17 | 2 | 51020037R | Kabel | |
| 18 | 1 | 51020030R | Schalter | |
| 19 | 1 | 51020102R | Kabel | |
| 20 | 1 | 51020125R | Kondensser | |
| 21 | 1 | 51020045R | Klemme | |
| 22 | 1 | 011500076A | Buchse | |
| 23 | 1 | 51020042R | Kabel | |
| 24 | 1 | 51020053R | Deckel | |
| 25 | 1 | 2317027R | Schalter | |
| 26 | 1 | 51020096R | Kombischieber | |
| 27 | 1 | 51020111R | Platte | |
| 28 | 2 | 3960109R | Schraube | |
| 29 | 1 | 51020044R | Kabel | |
| 30 | 1 | 4198020R | Feder | |
| 31 | 1 | 51020034R | Hebel | |
| 32 | 1 | 51010038R | Walzen | |
| 33 | 1 | 51010034AR | Feder | |
| 34 | 1 | 51020033R | Gas hebel | |
| 35 | 1 | 51020132R | Support | |
| 36 | 1 | 51020130R | Feder | |
| 37 | 1 | 51020131R | Hebel | |
| 38 | 1 | 3960059 | Schraube | |

OM 2000 E - Ritzelsatz



| Bild Nr. | Anz. | Teilenummer | Beschreibung | Technische Nachricht |
|----------|------|-------------|-------------------|----------------------|
| 1 | 1 | 51020007R | Halter | |
| 2 | 1 | 3801008 | Schraube | |
| 3 | 1 | 3918010 | Kugelscheibe | |
| 4 | 15 | 3960057R | Schraube | |
| 5 | 2 | 3033019 | Walze | |
| 6 | 1 | 50050020R | Oelpumpe | |
| 7 | 1 | 51022014R | Rad kpl. | |
| 8 | 1 | 51020023R | Flansch | |
| 9 | 1 | 3064032 | Scheibe | |
| 10 | 1 | 51020014R | Kupplungswelle | |
| 11 | 1 | 51020013R | Feder | |
| 12 | 1 | 51020022R | Welle | |
| 13 | 1 | 51010004R | Scheibe | |
| 14 | 1 | 3868003 | Kobelring | |
| 15 | 1 | 51020009R | Gehäuse motor | |
| 16 | 1 | 51020036R | Tank | |
| 17 | 1 | 51020017R | Rohr | |
| 18 | 1 | 51010016 | Stiftschraube | |
| 19 | 1 | 011500462 | Spannschraube kit | |
| 20 | 1 | 51020029R | Kettenradschutz | |
| 21 | 1 | 50010148R | Mutter | |
| 22 | 1 | 3035230 | Lager | |
| 23 | 1 | 51020077R | Scheibe | |
| 24 | 1 | 51020100R | Ritzel | |
| 25 | 1 | 3026013 | Ring | |
| 26 | 1 | 51020016R | Schlauch | |
| 27 | 1 | 50170159R | Saugkopf | |
| 28 | 1 | 51020113R | Feder | |
| 29 | 1 | 51020026R | Stopfen | |
| 30 | 1 | 51010040 | Einsatz | |
| 31 | 1 | 51020078R | Schraube | |
| 32 | 1 | 51020021R | Ritzel | |
| 33 | 1 | 320000004 | Schraube | |
| 34 | 1 | 018100045 | Mutter | |
| 35 | 2 | 3064035 | Scheibe | |
| 36 | 1 | 3064032 | Scheibe | |
| 37 | 1 | 3024005 | Seegerring | |
| 38 | 1 | 3916022R | Scheibe | |
| 39 | 1 | 3960059 | Schraube | |
| 40 | 1 | 51020090R | Hebel | |
| 41 | 1 | 51020092R | Feder | |
| 42 | 1 | 51020091R | Hebel | |
| 43 | 2 | 3960014 | Schraube | |

OM 2000 E - Schneidwerkzeuge



| Bild Nr. | Anz. | Teilenummer | Beschreibung | Technische Nachricht |
|----------|------|-------------|--|----------------------|
| 1 | 1 | 093500313 | Schiene 14" - cm 35 | |
| 2 | 1 | 004001108 | Schiene 16" - cm 41 | |
| 3 | 1 | 51010103R | Kette .3/8 x .050 (1.3mm) - 50 glieder | |
| 4 | 1 | 50050093R | Kette .3/8 x .050 (1.3mm) - 57 glieder | |
| 5 | 1 | 1144038 | Kettenschutz | |
| 6 | 1 | 2304073 | Kombischlüssel | |
| 7 | 1 | 51022011 | Etichettenkit | |

