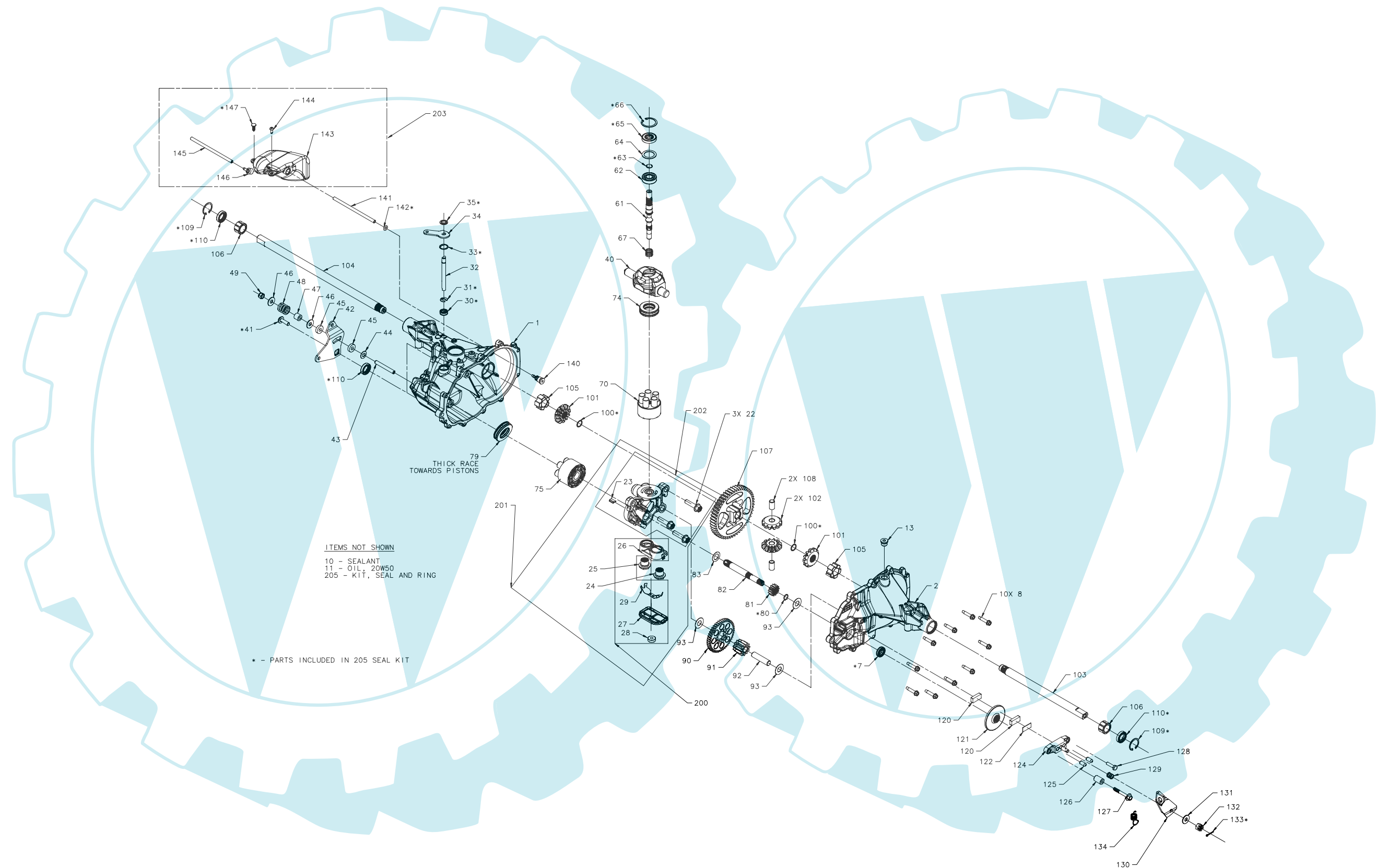


T2 SERVICE SCHEMATIC



T2 SERVICE SCHEMATIC

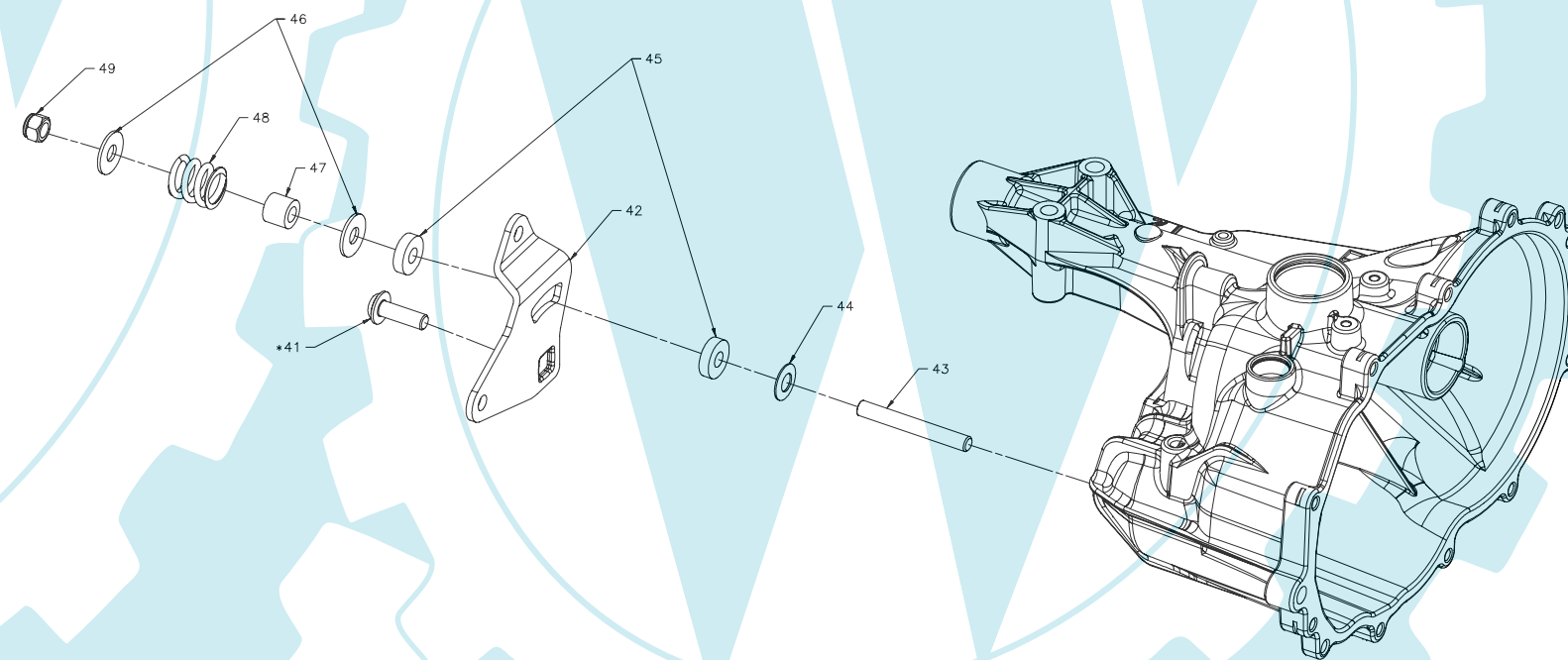
MODEL NUMBER: T 2 - - - - - * * -
 CHARACTER #: 1 2 - 3 4 5 6 - 7 8 9 10 - 11 12 13 14

CONTROL TYPE				
Char 9	ITEM	COMPONENT	DESCRIPTION	QTY
1	43	52304	SCREW, SET 5/16-24 X 2.50	1
	44	52643	WASHER, BELLEVILLE	1
	45	52298	WASHER, PLASTIC, .32X.80X.21	2
	46	44130	WASHER .34X.88X.06	2
	47	50278	SPACER .32X.59X.50	1
	48	50277	SPRING, HELICAL COMP	1
49	50317	NUT, HEX 5/16-24 NYLON INSERT	1	

CONTROL ARM				
Char10	ITEM	COMPONENT	DESCRIPTION	QTY
A	42	52652	ARM, CNTRL	1

COMMON PARTS				
ITEM	COMPONENT	DESCRIPTION	QTY	
41	51812	SCREW, 5/16-18 X 1	1	

* - PARTS INCLUDED IN 205 SEAL KIT



T2 SERVICE SCHEMATIC

MODEL NUMBER: T 2 - * * - -
 CHARACTER #: 1 2 - 3 4 5 6 - 7 8 9 10 - 11 12 13 14

COMMON PARTS

ITEM	COMPONENT	DESCRIPTION	QTY
23	52502	PLATE, BYPASS	1
70	71548	ASSEMBLY, PISTON BLOCK, 5P8CC	1
75	70331	ASSEMBLY, PISTON BLOCK, 5P10CC	1
40	52450	TRUNNION, SWASH PLATE	1
74	52465	BRG, THRUST BALL 27X47X14	1
79	50551	BRG, THRUST BALL 30X52X13	1

CENTER SECTION

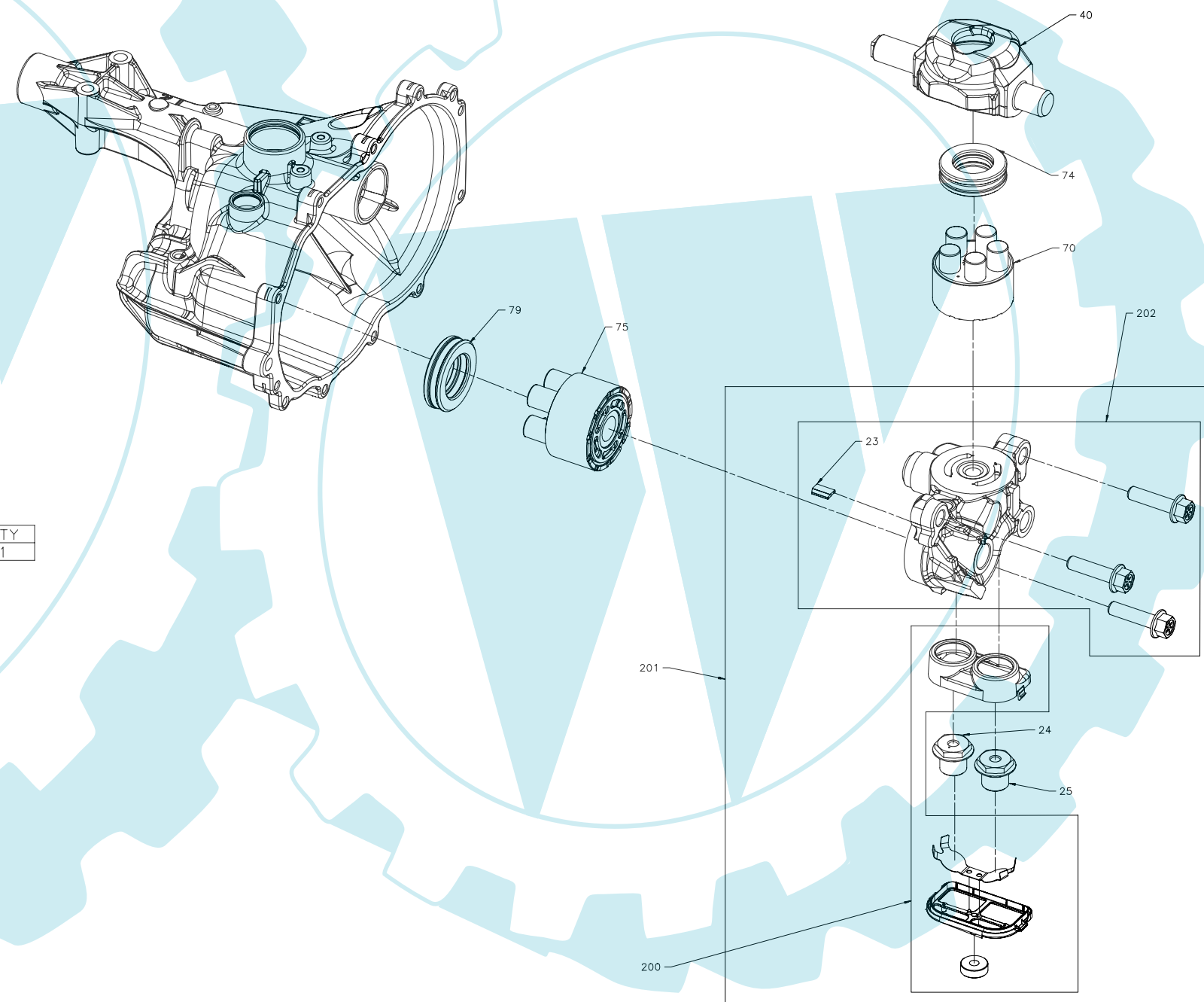
ITEM	COMPONENT	DESCRIPTION	QTY
201	71550	CENTER SECTION WITH FILTER	1
200	71553	KIT, FILTER	1
202	71557	CENTER SECTION KIT	1

CHECK VALVE ROTATION A

Char 5	ITEM	COMPONENT	DESCRIPTION	QTY
A	24	51207	ASSEMBLY, CHECK PLUG W/ WASHER, .000	1
B	24	51084	ASSEMBLY, CHECK PLUG W/ WASHER, .027	1

CHECK VALVE ROTATION B

Char 6	ITEM	COMPONENT	DESCRIPTION	QTY
C	25	51485	ASSEMBLY, CHECK PLUG W/ WASHER, .027, SPRING	1



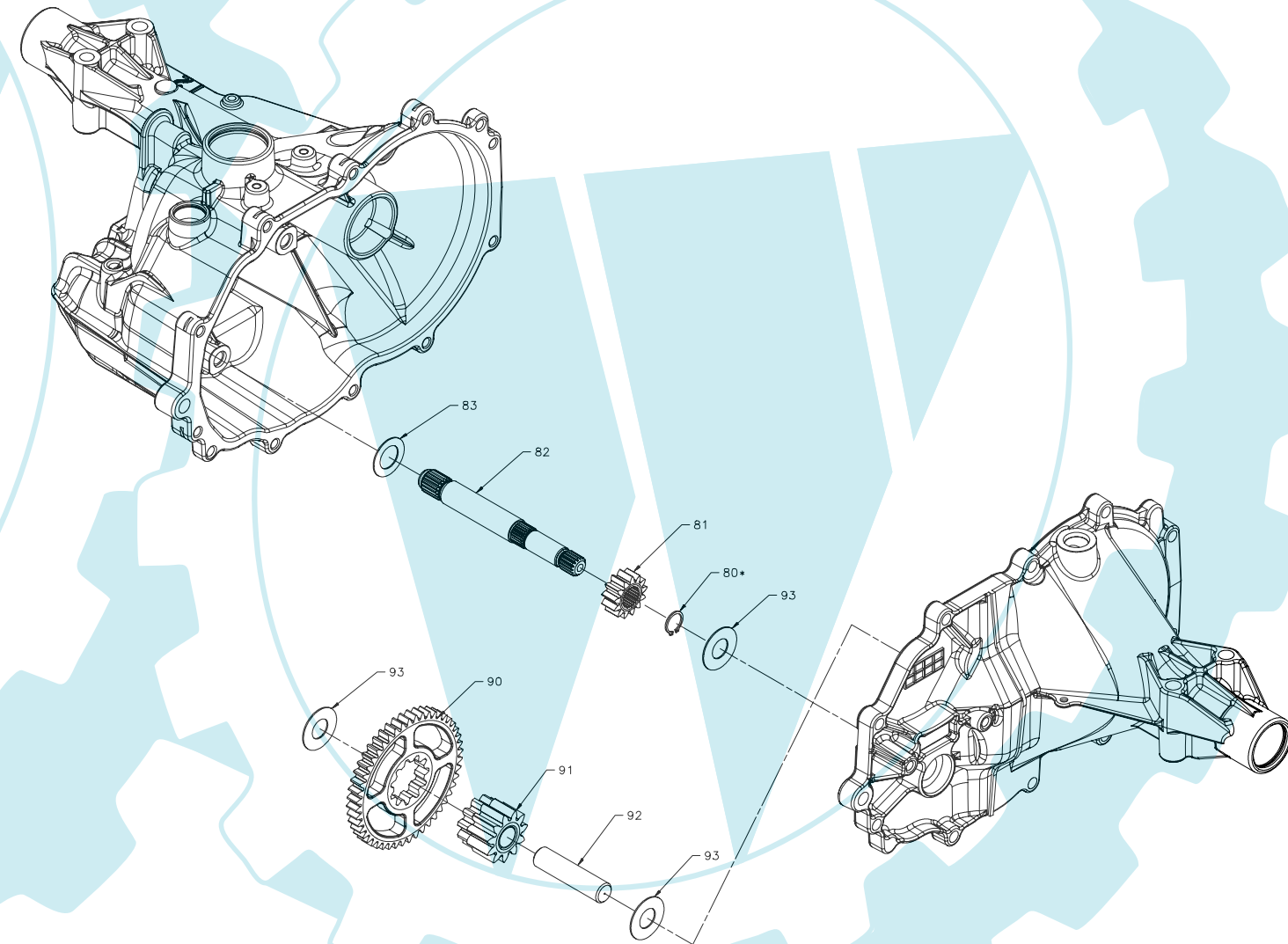
T2 SERVICE SCHEMATIC

MODEL NUMBER: T 2 - * - - -
 CHARACTER #: 1 2 - 3 4 5 6 - 7 8 9 10 - 11 12 13 14

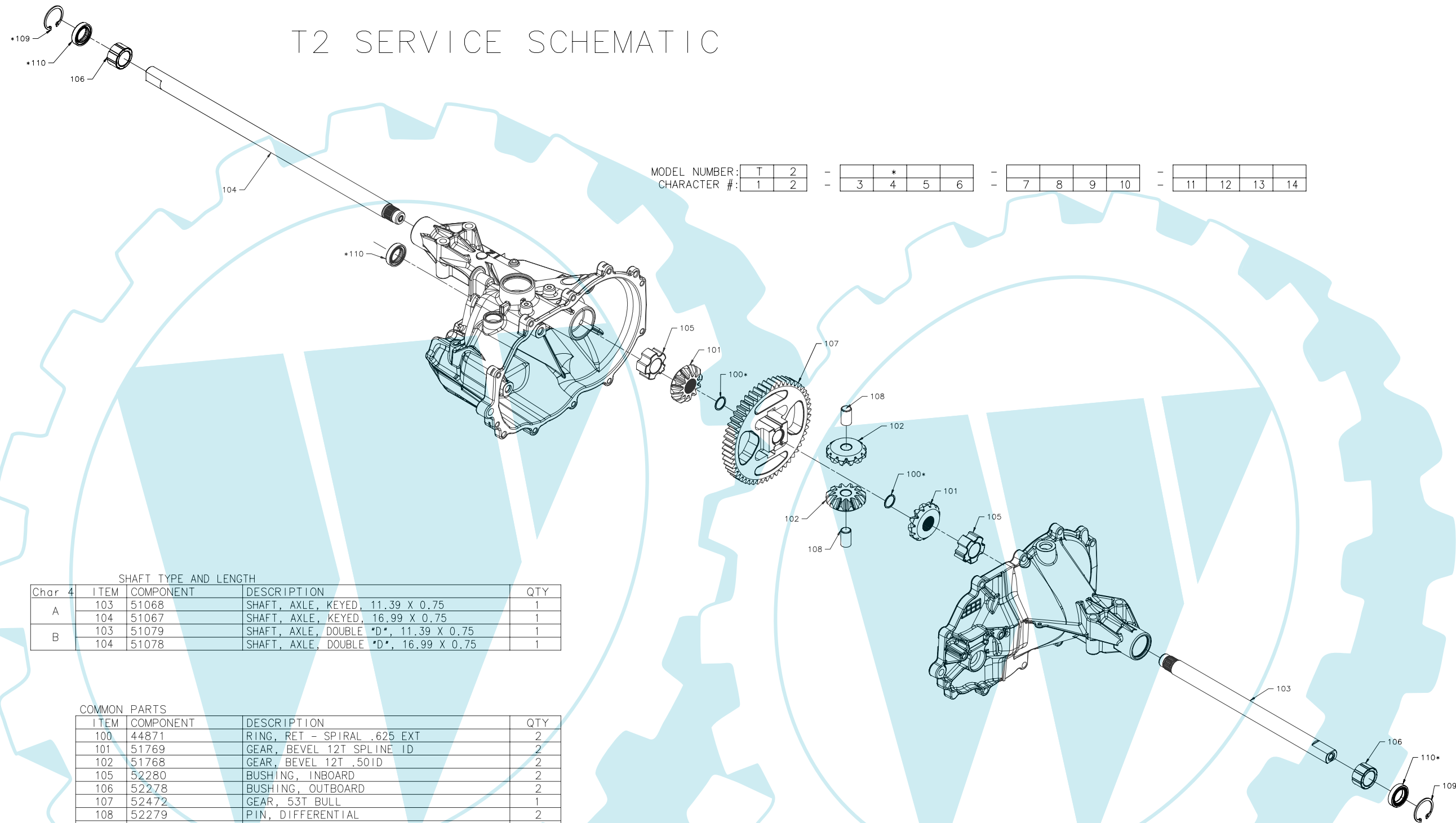
GEAR RATIO				
Char 3	ITEM	COMPONENT	DESCRIPTION	QTY
A	081	52466	GEAR, 13T PINION	1
	090	52469	GEAR, 11T/48T	1
B	081	52484	GEAR, 14T PINION	1
	090	52483	GEAR, 11T/47T	1

COMMON PARTS				
ITEM	COMPONENT	DESCRIPTION	QTY	
080	44354	RING, RET .50 EXT	1	
082	52467	SHAFT, MOTOR	1	
083	52468	WASHER .60X1.00X.03	1	
091	52470	GEAR, JACKSHAFT 11T	1	
092	52471	JACK SHAFT (PIN)	1	
093	50132	WASHER .5X1.0X.03	3	

* - PARTS INCLUDED IN 205 SEAL KIT



T2 SERVICE SCHEMATIC



MODEL NUMBER: T 2 - * - -
 CHARACTER #: 1 2 - 3 4 5 6 - 7 8 9 10 - 11 12 13 14

SHAFT TYPE AND LENGTH

Char 4	ITEM	COMPONENT	DESCRIPTION	QTY
A	103	51068	SHAFT, AXLE, KEYED, 11.39 X 0.75	1
	104	51067	SHAFT, AXLE, KEYED, 16.99 X 0.75	1
B	103	51079	SHAFT, AXLE, DOUBLE *D*, 11.39 X 0.75	1
	104	51078	SHAFT, AXLE, DOUBLE *D*, 16.99 X 0.75	1

COMMON PARTS

ITEM	COMPONENT	DESCRIPTION	QTY
100	44871	RING, RET - SPIRAL .625 EXT	2
101	51769	GEAR, BEVEL 12T SPLINE ID	2
102	51768	GEAR, BEVEL 12T .50ID	2
105	52280	BUSHING, INBOARD	2
106	52278	BUSHING, OUTBOARD	2
107	52472	GEAR, 53T BULL	1
108	52279	PIN, DIFFERENTIAL	2
109	52275	RING, RET, INT AXLE	2
110	45076	SEAL, LIP .75X1.125X.25 TC	3

* - PARTS INCLUDED IN 205 SEAL KIT



T2 SERVICE SCHEMATIC

MODEL NUMBER: T 2 - 3 4 5 6 - * 7 8 9 10 - * 11 12 13 14
 CHARACTER #: 1 2 - 3 4 5 6 - 7 8 9 10 - 11 12 13 14

BYPASS ARM

Char	11	ITEM	COMPONENT	DESCRIPTION	QTY
1	34	52460		ARM, BYPASS	1

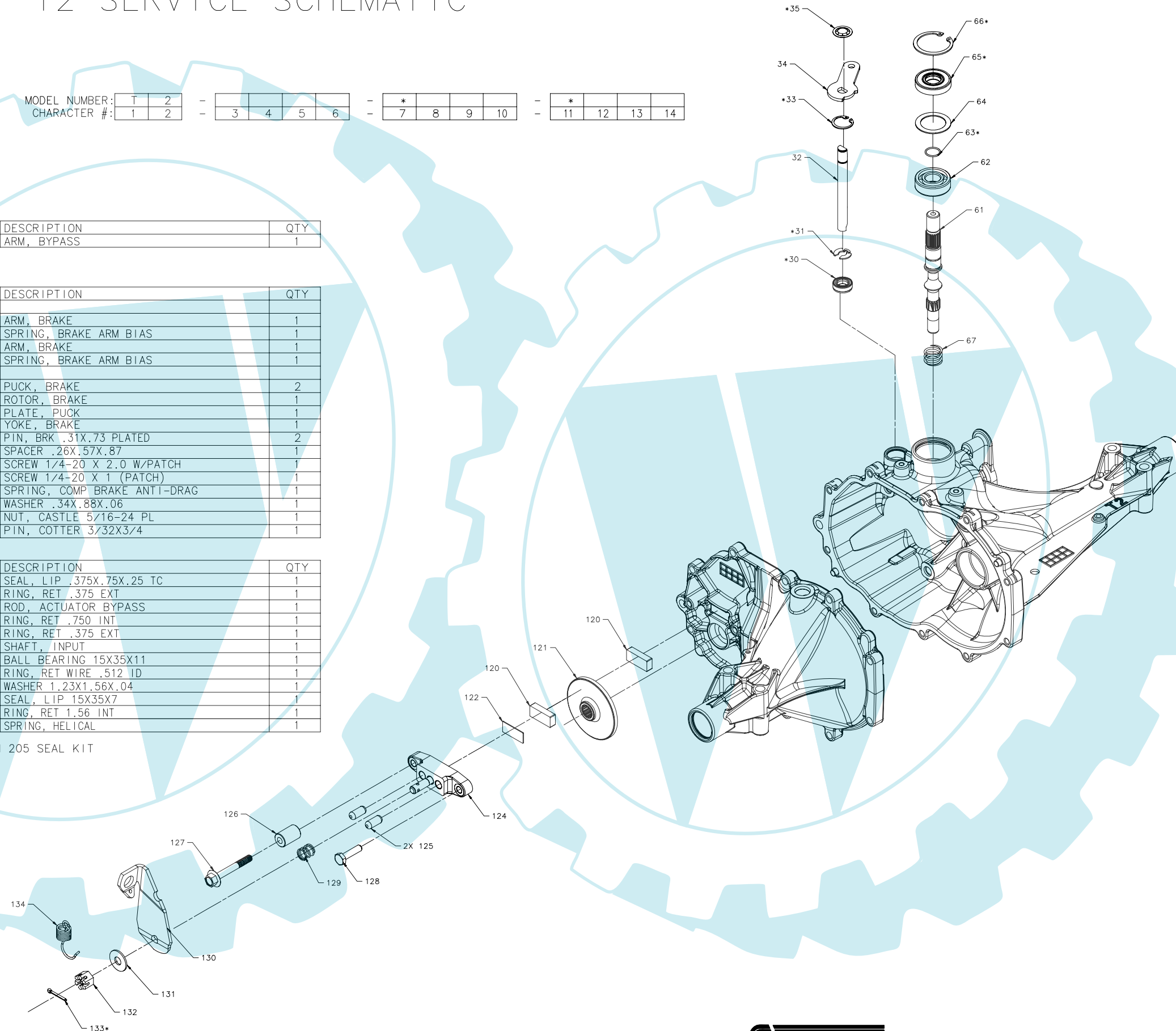
BRAKE ARM

Char	7	ITEM	COMPONENT	DESCRIPTION	QTY
X			NONE		
1	130	23710		ARM, BRAKE	1
		51529		SPRING, BRAKE ARM BIAS	1
2	130	52374		ARM, BRAKE	1
		51529		SPRING, BRAKE ARM BIAS	1
AND					
1,2	120	44132		PUCK, BRAKE	2
		52473		ROTOR, BRAKE	1
		44134		PLATE, PUCK	1
		62589		YOKE, BRAKE	1
		44127		PIN, BRK .31X.73 PLATED	2
		23711		SPACER .26X.57X.87	1
		51146		SCREW 1/4-20 X 2.0 W/PATCH	1
		44433		SCREW 1/4-20 X 1 (PATCH)	1
		50919		SPRING, COMP BRAKE ANTI-DRAG	1
		44130		WASHER .34X.88X.06	1
		44142		NUT, CASTLE 5/16-24 PL	1
		44101		PIN, COTTER 3/32X3/4	1

COMMON PARTS

ITEM	COMPONENT	DESCRIPTION	QTY
30	51626	SEAL, LIP .375X.75X.25 TC	1
31	51628	RING, RET .375 EXT	1
32	52459	ROD, ACTUATOR BYPASS	1
33	51627	RING, RET .750 INT	1
35	51630	RING, RET .375 EXT	1
61	52462	SHAFT, INPUT	1
62	2003043	BALL BEARING 15X35X11	1
63	2003016	RING, RET WIRE .512 ID	1
64	2003018	WASHER 1.23X1.56X.04	1
65	9008000-0128	SEAL, LIP 15X35X7	1
66	2003052	RING, RET 1.56 INT	1
67	52669	SPRING, HELICAL	1

* - PARTS INCLUDED IN 205 SEAL KIT



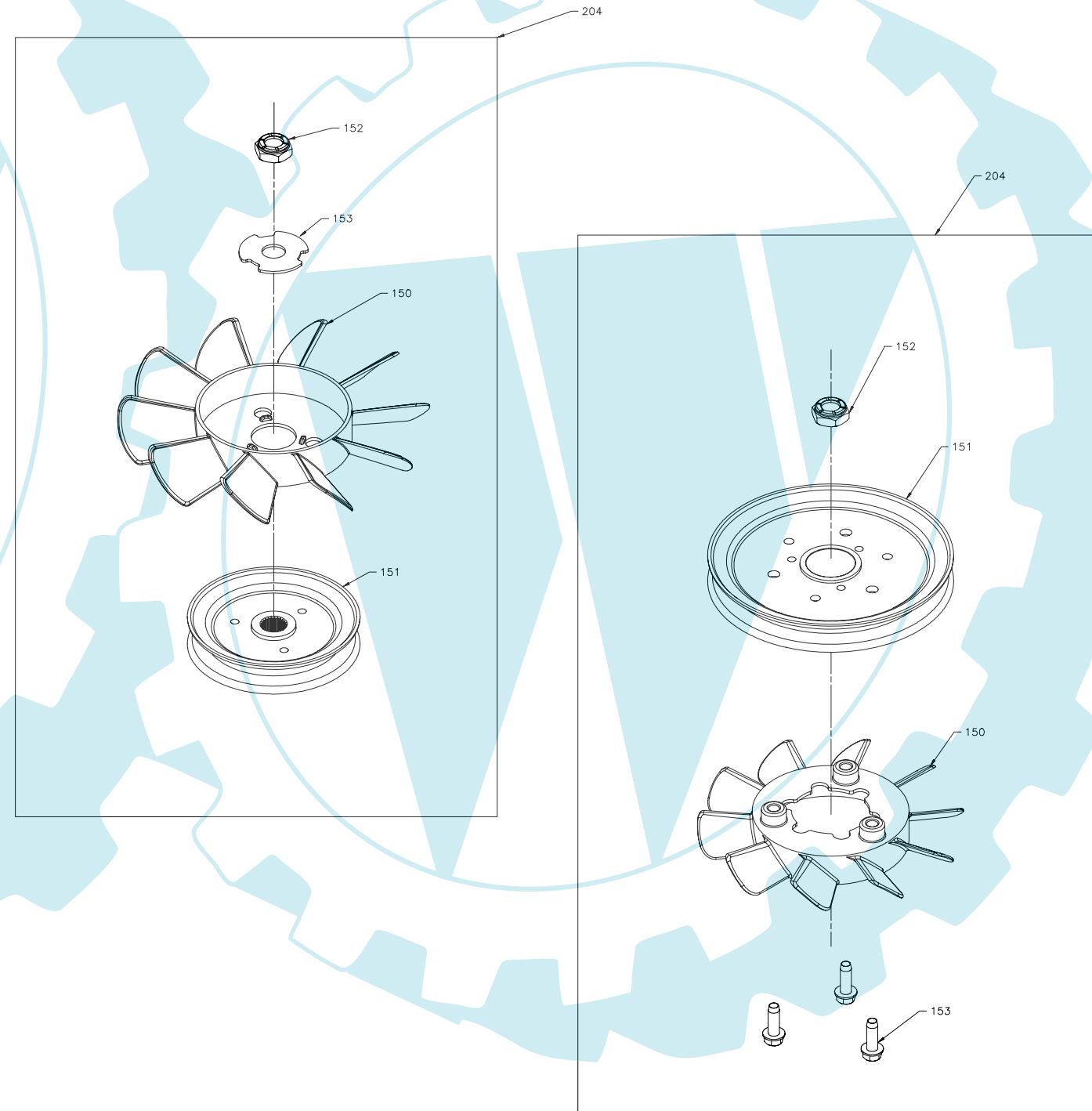
T2 SERVICE SCHEMATIC

FAN & PULLEY KIT

Char12	ITEM	COMPONENT	DESCRIPTION	QTY
X		None		
A	150	51230	FAN, 7", 10 BLADE	1
	151	51231	PULLEY ASSEMBLY, 3.86"	1
	152	51244	NUT, HEX LOCK, 1/2-20 (NYLON INSERT)	1
	153	51523	WASHER, OD SLOTTED .53 X 1.63 X .06	1
B	150	51365	FAN, 6", 10 BLADE	1
	151	51173	PULLEY ASSEMBLY, 5.5"	1
	152	51244	NUT, HEX LOCK, 1/2-20 (NYLON INSERT)	1
	153	50752	SCREW, 1/4-20 X 0.75	3
C	150	51365	FAN, 6", 10 BLADE	1
	151	51721	PULLEY ASSEMBLY, 4.4"	1
	152	51244	NUT, HEX LOCK, 1/2-20 (NYLON INSERT)	1
	153	50752	SCREW, 1/4-20 X 0.75	3
D	150	51362	FAN, 6", 10 BLADE	1
	151	51182	PULLEY ASSEMBLY, 4.5"	1
	152	51244	NUT, HEX LOCK, 1/2-20 (NYLON INSERT)	1
	153	51523	WASHER, OD SLOTTED .53 X 1.63 X .06	1
E	150	51365	FAN, 6", 10 BLADE	1
	151	50302	PULLEY ASSEMBLY, 4.5"	1
	152	51244	NUT, HEX LOCK, 1/2-20 (NYLON INSERT)	1
	153	50752	SCREW, 1/4-20 X 0.75	3
F	150	51230	FAN, 7", 10 BLADE	1
	151	51879	PULLEY ASSEMBLY, 3.86"	1
	152	51244	NUT, HEX LOCK, 1/2-20 (NYLON INSERT)	1
	153	51523	WASHER, OD SLOTTED .53 X 1.63 X .06	1
G	150	51230	FAN, 7", 10 BLADE	1
	151	51416	PULLEY ASSEMBLY, 4.13"	1
	152	51244	NUT, HEX LOCK, 1/2-20 (NYLON INSERT)	1
	153	51523	WASHER, OD SLOTTED .53 X 1.63 X .06	1

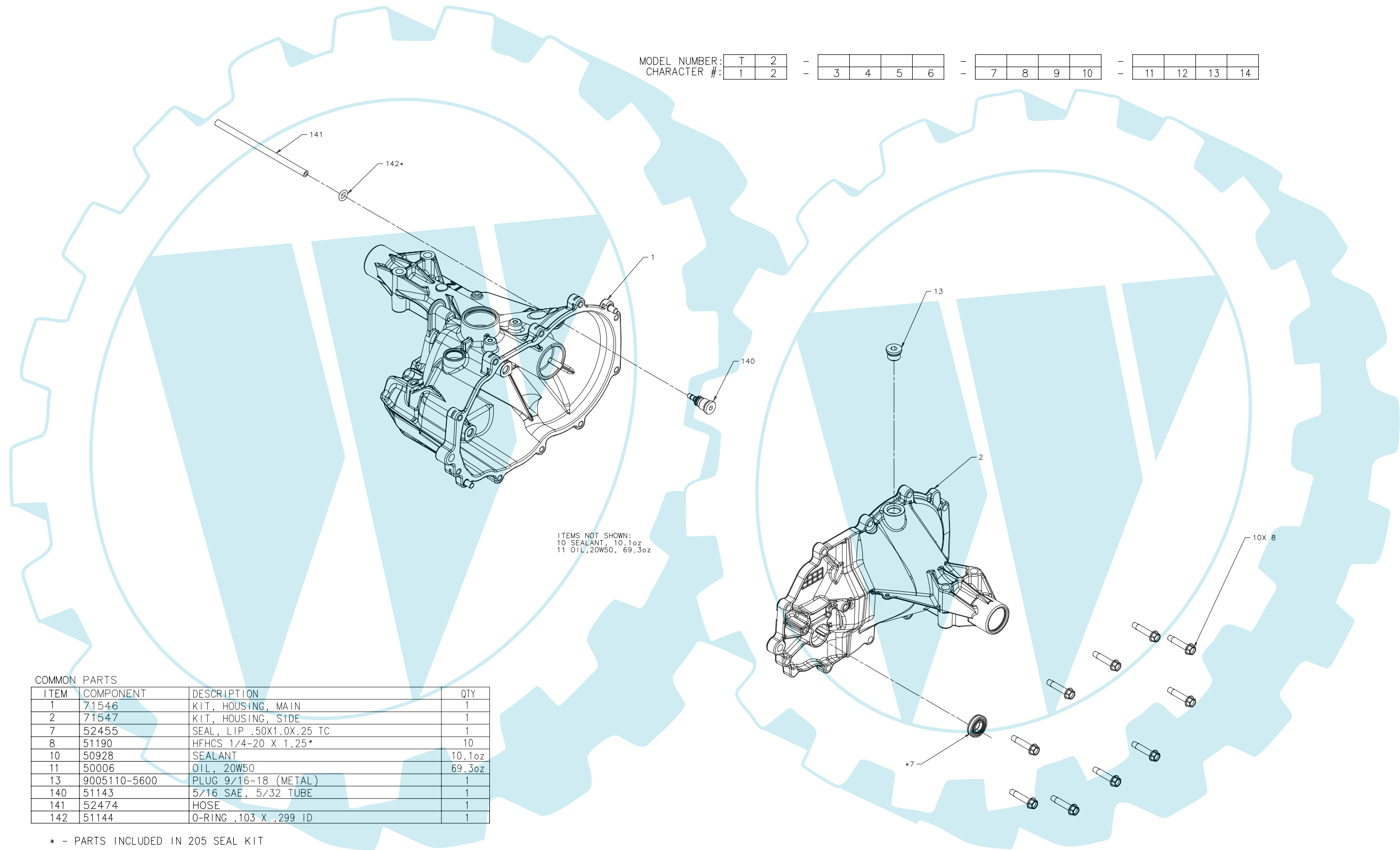
Char12	ITEM	COMPONENT	DESCRIPTION	QTY
A		70460	KIT, FAN & PULLEY	1
B		70651	KIT, FAN & PULLEY	1
C	204	70810	KIT, FAN & PULLEY	1
D		70583	KIT, FAN & PULLEY	1
E		70591	KIT, FAN & PULLEY	1
F		70998	KIT, FAN & PULLEY	1
G		70630	KIT, FAN & PULLEY	1

MODEL NUMBER: T 2 - - - - - *
 CHARACTER #: 1 2 - 3 4 5 6 - 7 8 9 10 - 11 12 13 14



T2 SERVICE SCHEMATIC

MODEL NUMBER: T 2 - - -
 CHARACTER #: 1 2 - 3 4 5 6 - 7 8 9 10 - 11 12 13 14



ITEMS NOT SHOWN:
 10 SEALANT, 10.1oz
 11 OIL, 20W50, 69.3oz

COMMON PARTS

ITEM	COMPONENT	DESCRIPTION	QTY
1	71546	KIT, HOUSING, MAIN	1
2	71547	KIT, HOUSING, SIDE	1
7	52455	SEAL, LIP .50X1.0X.25 TC	1
8	51190	HFCS 1/4-20 X 1.25 *	10
10	50928	SEALANT	10.1oz
11	50006	OIL, 20W50	69.3oz
13	9005110-5600	PLUG 9/16-18 (METAL)	1
140	51143	5/16 SAE, 5/32 TUBE	1
141	52474	HOSE	1
142	51144	O-RING .103 X .299 ID	1

* - PARTS INCLUDED IN 205 SEAL KIT

