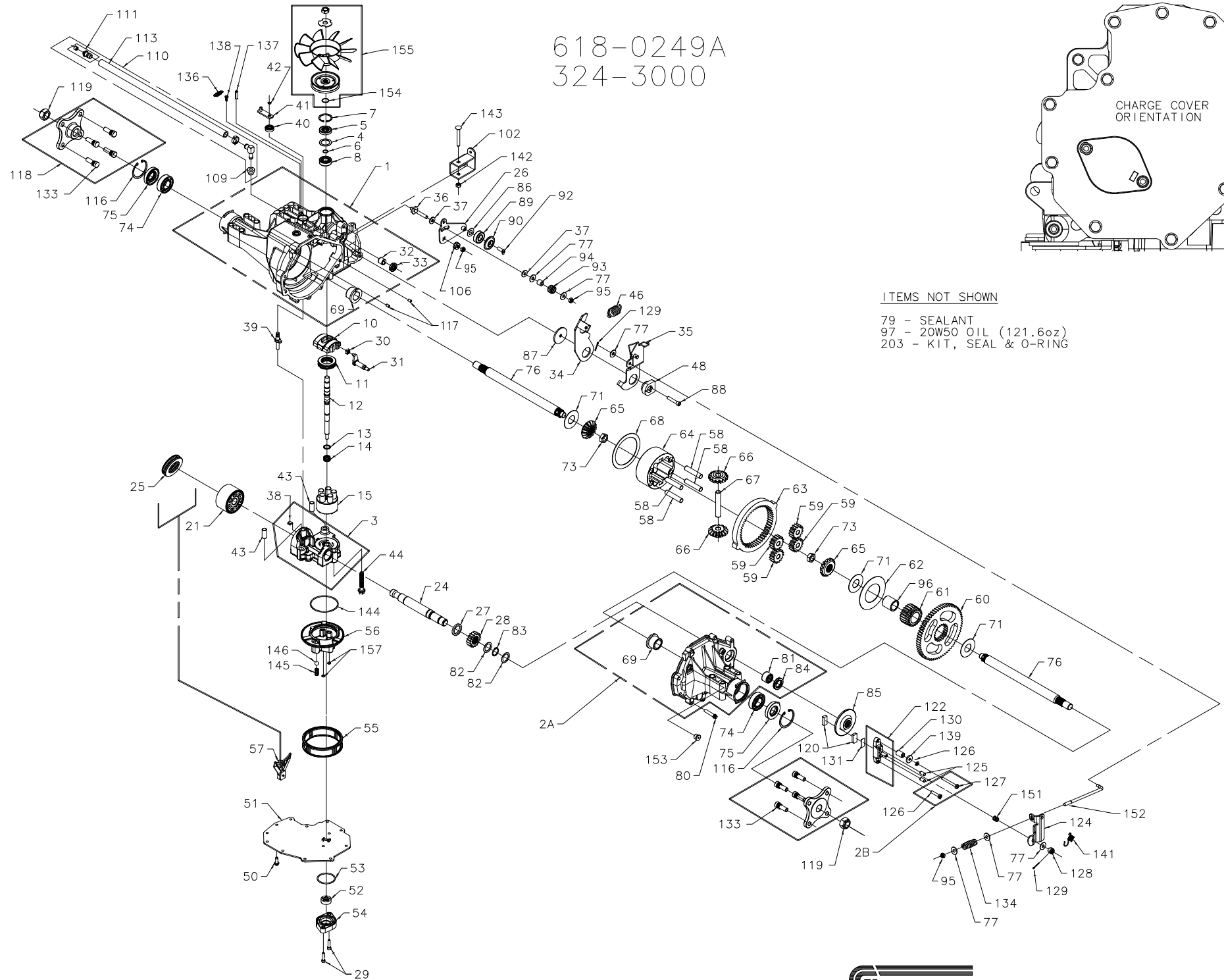
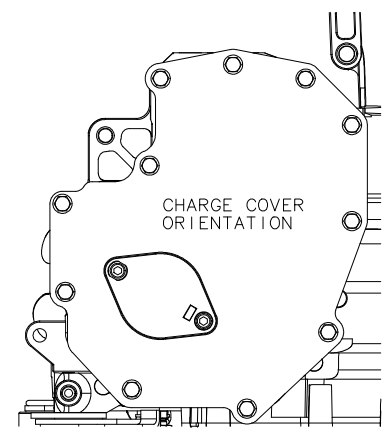
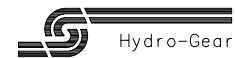


618-0249A
324-3000



ITEMS NOT SHOWN

- 79 - SEALANT
- 97 - 20W50 OIL (121.6oz)
- 203 - KIT, SEAL & O-RING



618-0249A
324-3000

ITEM#	PART #	QTY	DESCRIPTION
1	70297	1	ASSEMBLY, MAIN HOUSING
		1	HOUSING, MAIN
		1	SEAL, LIP 12 X 25 X 7
		1	BEARING, FLANGE 1.0 X 1.376 X .99
		1	BEARING, TRUNNION
		2	BEARING, CRADLE
2A	71120	1	ASSEMBLY, RIGHT HAND HOUSING
		1	HOUSING, RIGHT HAND
		1	BEARING, FLANGE 1.0 X 1.376 X .99
		1	BEARING, NEEDLE .875 X 1.125 X 1.5
		1	SEAL, LIP .875 X 1.375 X .250
2B	71139	1	KIT, BRAKE BOLT
		1	BOLT, HEX HD 1/4-20 X 1.25 W/PATCH
		1	BOLT, HEX HD 1/4-20 X 2.25 W/PATCH
3	70683	1	ASSEMBLY, CENTER SECTION
		1	CENTER SECTION
		1	BEARING, JOURNAL .50 X .59 X .50
		1	BEARING, .90 X 1.0 X .75
		1	PLATE, BYPASS
		2	CHECK PLUG ASSEMBLY, .027 BLEED
4	2003018	1	SPACER, .98 X 1.37 X .04
5	9008000-0128	1	SEAL, LIP 15 X 35 X 7
6	2003016	1	RING, RETAINING
7	2003052	1	RING, RETAINING
8	2003043	1	BEARING, BALL .59 X 1.38 X .43
10	2003087	1	SWASHPLATE, VARIABLE
11	50551	1	BEARING, THRUST 30 X 52 X 13
12	50795	1	SHAFT, INPUT (STD CHARGE)
13	2003017	1	WASHER, THRUST .59 X .79 X .04
14	2003014	1	SPRING, BLOCK
15	70331	1	ASSEMBLY, BLOCK
		1	BLOCK, CYLINDER
		5	PISTON
		5	SPRING, COMPRESSION
		5	WASHER, THRUST
21	70082	1	ASSEMBLY, BLOCK
		1	BLOCK, CYLINDER
		7	PISTON
		7	SPRING, COMPRESSION
		7	WASHER, THRUST
24	50662	1	SHAFT, MOTOR
25	50552	1	BEARING, THRUST 42 X 68 X 16
26	50857	1	ARM, CONTROL
27	50774	1	SPACER, 1.03 X 1.38 X .184
28	50661	1	GEAR, 16T PINION
29	50975	2	SCREW, CAP M6 X 1 X 25
30	2000015	1	GUIDE, SLOT
31	50807	1	ARM, TRUNNION TAPERED SQUARE
32	2003009	1	BEARING, TRUNNION
33	9008000-0126	1	SEAL, LIP 12 X 25 X 7
34	50831	1	ARM, RETURN
35	51512	1	ARM, ACTUATING
36	50284	1	STUD, LONG 5/16-24
37	50281	2	PUCK, .798 X .319 X .097
38	70680	1	KIT, BYPASS PLATE
39	2003555	1	ACTUATOR, BYPASS
40	45074	1	SEAL, LIP 10 X 25 X 7
41	50270	1	ARM, BYPASS
42	44870	1	RING, RETAINING

ITEM#	PART #	QTY	DESCRIPTION
43	50002	2	PIN, HOLLOW .39 X .50 X 1.12
44	50016	3	SCREW, HEX FLANGE 3/8-24 X 2.5
46	50833	1	SPRING, 2.09 IN RETURN
48	50835	1	PUCK, ADJUSTING
50	50752	11	SCREW, HEX FLANGE 1/4-20 X .75
51	50972	1	COVER, LOWER W/ 2 KIDNEYS
52	50273	1	GEROTOR
53	9004101-1340	1	O-RING, 1.862 X 2.068
54	50260	1	HOUSING, CHARGE PUMP
55	70538	1	KIT, FILTER
		2	GASKET, 4.24 X 4.40 X .10
		1	FILTER, STD CHARGE
56	51156	1	MANIFOLD, CHARGE
57	50796	1	RETAINER, MOTOR BEARING
58	50776	4	PIN, CARRIER
59	50763	4	GEAR, 15T PLANET
60	50646	1	GEAR, 67T SPUR
61	50645	1	GEAR, 21T SUN
62	50769	1	WASHER, THRUST 2.32 X 4.10 X .05
63	50764	1	GEAR, 51T RING
64	50765	1	CARRIER, PLANETARY
65	50647	2	GEAR, 14T MITER (SPLINED)
66	50648	2	GEAR, 14T MITER (UNSPLINED)
67	50766	1	SHAFT, DIFFERENTIAL
68	50767	1	WASHER, THRUST 3.46 X 4.39 X .05
69	50768	2	BEARING, FLANGE 1.0 X 1.376 X .99
71	50788	3	WASHER, 1.0 X 2.25 X .04
73	50791	2	NUT, HEX 5/8-18 W/ PATCH
74	50771	2	BEARING, BALL 25.4 X 52 X 15
75	50772	2	SEAL, LIP 1.0 X 2.049 X .375
76	50825	2	SHAFT, AXLE 1.0 X 13.84 (30° SPLINED)
77	44130	6	WASHER, .34 X .88 X .06
79	50928	10.1oz	SEALANT
80	50868	9	SCREW, TORX HD 5/16-18 X 1.5
81	44752	1	BEARING, NEEDLE .875 X 1.125 X .75
82	50777	2	WASHER, FLAT .88 X 1.25 X .04
83	50775	1	RING, RETAINING
84	50773	1	SEAL, LIP .875 X 1.375 X .250
85	50779	1	DISK, BRAKE
86	50132	1	WASHER, .51 X 1.0 X .03
87	50836	1	SPACER, .32 X 1.96 X .15
88	50837	1	SCREW, SOCKET HD CAP 5/16-24 X 1.5
89	44147	1	BEARING, BALL .62 X 1.38 X .44
90	51200	1	SPACER, LOCATING
92	50870	1	SCREW, COUNTERSUNK 5/16-18 X 1.0
93	50277	1	SPRING, HELICAL COMP
94	50278	1	SPACER, .587 X .319 X .500
95	50108	3	NUT, HEX LOCK 5/16-24
96	50866	1	BUSHING, SLEEVE 1.0 X 1.3 X 1.34
97		121.6oz	OIL, 20W50
102	50813	1	BRACKET, TORQUE
103	50818	1	PULLEY, 3.6 IN
104	51862	1	FAN, 7.0 (10 BLADE)
106	51604	1	SPACER, TRUNNION
107	51523	1	WASHER, OD SLOTTED .53 X 1.63 X .06
109	50133	1	BUSHING, VENT (RUBBER)

ITEM#	PART #	QTY	DESCRIPTION
110	70302	1	KIT, FITTING
		1	BUSHING, VENT (RUBBER)
		1	ASSEMBLY, CAP-VENT
		1	KIT, 90° FITTING & HOSE ASS'Y
111	70109	1	ASSEMBLY, CAP-VENT
		1	VENT, CAP
		1	VENT, PLASTIC
113	70301	1	KIT, 90° FITTING & HOSE ASS'Y
		1	FITTING, 90° METAL VENT
		1	CLAMP, PINCH
		1	HOSE, 0.5 X 20
115	44133	1	NUT, HEX 1/2-20 W/ PATCH
116	50859	2	RING, RETAINING
117	9004800-2506	2	PIN, STANDARD HEADLESS
118	70276	2	ASSEMBLY, HUB
		1	HUB, 4 STUD (PAINTED)
		4	STUD, 7/16-14 X 1.35 (RIB NECK)
119	50863	2	NUT, HEX LOCK 3/4-16
120	44132	2	PUCK, BRAKE
121	51927	1	BOLT, HEX HD 1/4-20 X 1.25 W/PATCH
122	70633	1	ASSEMBLY, BRAKE YOKE
124	50911	1	ARM, BRAKE
125	44127	2	PIN, BRAKE ACTUATING
128	44142	1	NUT, CASTLE 5/16-24
129	44101	2	PIN, COTTER 3/32 X 3/4
130	23711	1	SPACER, .26 X .57 X .87
131	44134	1	PUCK, PLATE
132	51928	1	BOLT, HEX HD 1/4-20 X 2.25 W/PATCH
133	50869	8	STUD, 7/16-14 X 1.35 (RIB NECK)
134	50915	1	SPRING, COMPRESSION BRAKE ANTI-DRAW
136	50384	1	SPRING, BYPASS 1.33 IN EXTENSION
137	50882	1	PIN, SPRING .26 X 1
138	50653	1	BOLT, SELF TAPPING 10-32 X .5
139	44278	1	WASHER, .27 X .88 X .12
141	50884	1	SPRING, BRAKE ARM BIAS
142	43064	1	HEX LOCK NUT, 5/16-18
143	50886	1	BOLT, 5/16-18 X 2.5
144	50974	1	O-RING, 2.987 X 3.09
145	51157	1	SPRING, RELIEF
146	9001214-4400	1	BALL, 7/16 IN
151	50919	1	SPRING, COMP. BRAKE ANTI-DRAW
152	50914	1	ROD, BRAKE PULL
153	9005110-5600	1	PLUG, 9/16-18 (METAL)
154	50920	1	RING, RETAINING
155	70311	1	KIT, FAN/PULLEY
		1	NUT, HEX 1/2-20 W/ PATCH
		1	WASHER, O.D SLOTTED .53 X 1.63 X .06
		1	FAN, 7.0 IN (10 BLADE)
		1	PULLEY, 3.6 IN
		1	RING, RETAINING
157	50977	2	O-RING, .239 X .379
203	70492	1	KIT, SEAL & O-RING
		1	SEAL, LIP 15 X 35 X 7
		1	SEAL, LIP 12 X 25 X 7
		1	SEAL, LIP 10 X 25 X 7
		1	O-RING, 1.862 X 2.068
		2	SEAL, LIP 1.0 X 2.049 X .375
		1	SEAL, LIP .875 X 1.375 X .250
		4	O-RING, .239 X .309
		1	KIT, O-RING, MANIFOLD
		1	PIN, SPRING .26 X 1

