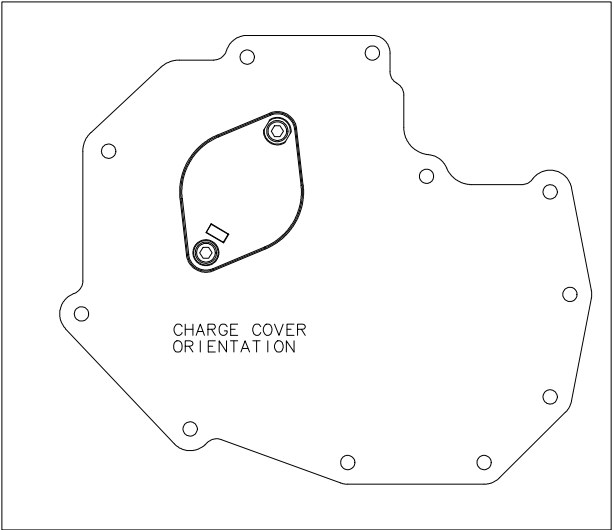
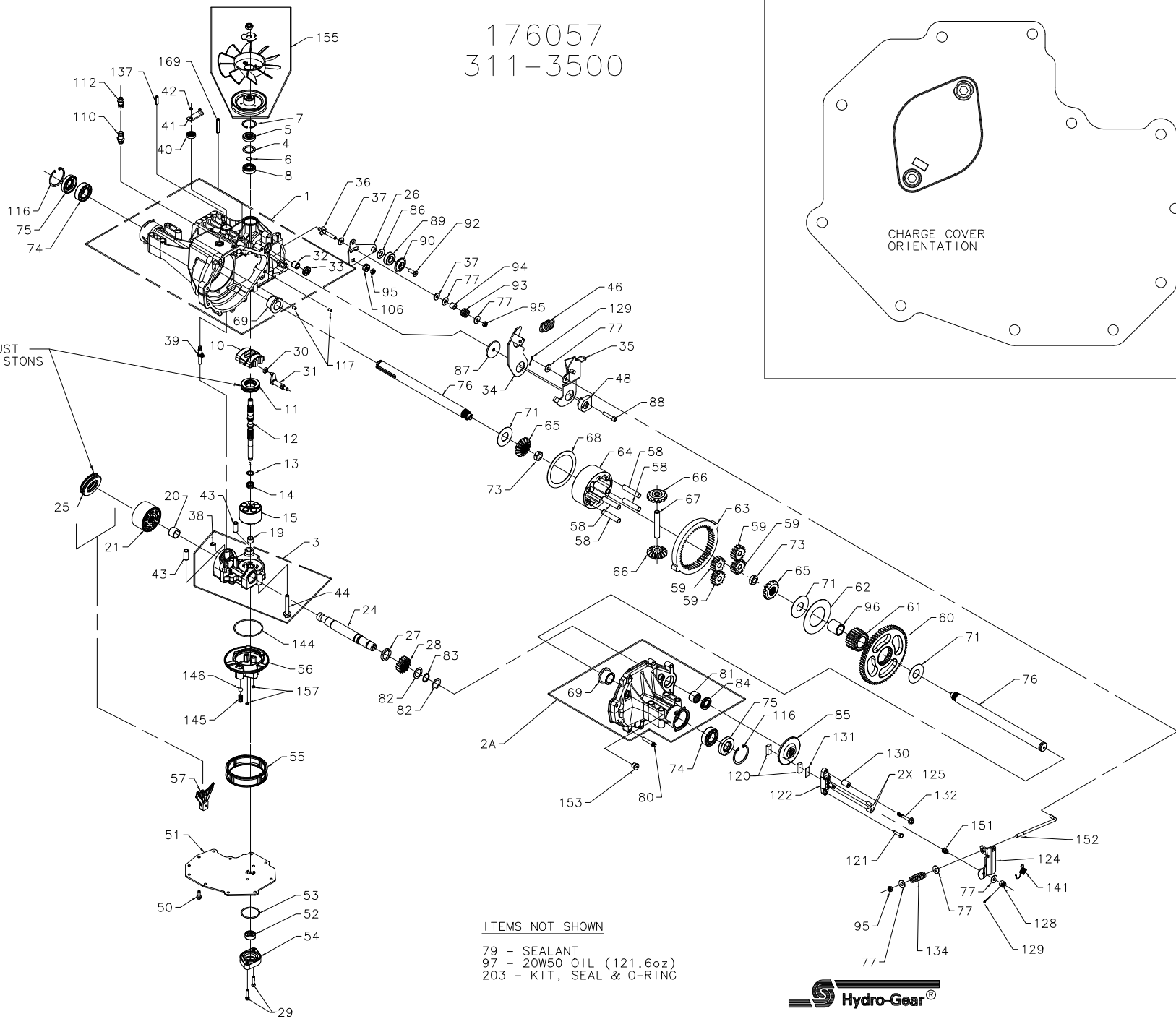


176057
311-3500



THICK RACE MUST BE TOWARDS PISTONS



ITEMS NOT SHOWN

- 79 - SEALANT
- 97 - 20W50 OIL (121.6oz)
- 203 - KIT, SEAL & O-RING



176057
311-3500

ITEM #	PART #	QTY	DESCRIPTION	ITEM #	PART #	QTY	DESCRIPTION	ITEM #	PART #	QTY	DESCRIPTION
1	70297	1	ASSEMBLY, MAIN HOUSING	36	50284	1	STUD, LONG 5/16-24	93	50277	1	SPRING, HELICAL COMP
		1	HOUSING, MAIN	37	50281	2	PUCK, .798 X .319 X .097	94	50278	1	SPACER, .587 X .319 X .500
		1	SEAL, LIP 12 X 25 X 7	38	70680	1	KIT, BYPASS PLATE	95	50108	3	NUT, HEX LOCK 5/16-24
		1	BEARING, FLANGE 1.0 X 1.376 X .99	39	2003555	1	ACTUATOR, BYPASS	96	50866	1	BUSHING, SLEEVE 1.0 X 1.3 X 1.34
		1	BEARING, TRUNNION	40	45074	1	SEAL, LIP 10 X 25 X 7	97		121.6oz	OIL, 20W50
		2	BEARING, CRADLE	41	50270	1	ARM, BYPASS	106	51604	1	SPACER, TRUNNION
2A	71120	1	ASSEMBLY, RIGHT HAND HOUSING	42	44870	1	RING, RETAINING	110	70110	1	ASSEMBLY, O-RING & FITTING
		1	HOUSING, RIGHT HAND	43	50002	2	PIN, HOLLOW .39 X .50 X 1.12			1	O-RING, .468 X .624
		1	BEARING, FLANGE 1.0 X 1.376 X .99	44	50016	3	SCREW, HEX FLANGE 3/8-24 X 2.5			1	FITTING, PLASTIC STRAIGHT
		1	BEARING, NEEDLE .875 X 1.125 X .75	46	50833	1	SPRING, 2.09 IN RETURN	112	70109	1	ASSEMBLY, CAP-VENT
		1	SEAL, LIP .875 X 1.375 X .250	48	50835	1	PUCK, ADJUSTING			1	CAP, VENT
3	70684	1	ASSEMBLY, CENTER SECTION	50	50752	11	SCREW, HEX FLANGE 1/4-20 X .75			1	VENT, PLASTIC
		1	CENTER SECTION	51	50972	1	COVER, LOWER W/2 KIDNEYS	116	50859	2	RING, RETAINING
		1	BEARING, JOURNAL .50 X .59 X .50	52	50273	1	GEROTOR	117	9004800-2506	2	PIN, STANDARD HEADLESS
		1	BEARING, .90 X 1.0 X .75	53	9004101-1340	1	O-RING, 1.862 X 2.068	120	44132	2	PUCK, BRAKE
		1	PLATE, BYPASS	54	50260	1	HOUSING, CHARGE PUMP	121	51927	1	BOLT, HEX HD 1/4-20 X 1.25 W/PATCH
		1	CHECK PLUG ASSEMBLY, .044 BLEED	55	51315	1	FILTER, STD CHARGE	122	70633	1	ASSEMBLY, BRAKE YOKE
		1	CHECK PLUG ASSEMBLY, NO BLEED	56	51156	1	MANIFOLD, CHARGE	124	50911	1	ARM, BRAKE
4	2003018	3	SCREW, HEX FLANGE 3/8-24 X 2.5	57	50796	1	RETAINER, MOTOR BEARING	125	44127	2	PIN, BRAKE ACTUATING
5	9008000-0128	1	SPACER, .98 X 1.37 X .04	58	50776	4	PIN, CARRIER	128	44142	1	NUT, CASTLE 5/16-24
6	2003016	1	SEAL, LIP 15 X 35 X 7	59	50763	4	GEAR, 15T PLANET	129	44101	2	PIN, COTTER 3/32 X 3/4
7	2003052	1	RING, RETAINING	60	50646	1	GEAR, 67T SPUR	130	23711	1	SPACER, .26 X .57 X .87
8	2003043	1	BEARING, BALL .59 X 1.38 X .43	61	50645	1	GEAR, 21T SUN	131	44134	1	PUCK, PLATE
10	2003087	1	SWASHPLATE, VARIABLE	62	50769	1	WASHER, THRUST 2.32 X 4.10 X .05	132	51928	1	BOLT, HEX HD 1/4-20 X 2.25 W/PATCH
11	50551	1	BEARING, THRUST 30 X 52 X 13	63	50764	1	GEAR, 51T RING	134	50915	1	SPRING, COMPRESSION BRAKE ANTI-DRAW
12	50795	1	SHAFT, INPUT (STD CHARGE)	64	50765	1	CARRIER, PLANETARY	137	50882	1	PIN, SPRING .26 X 1
13	2003017	1	WASHER, THRUST .59 X .79 X .04	65	51431	2	GEAR, 14T STEEL MITER (SPLINED)	139	44278	1	WASHER, .27 X .88 X .12
14	2003014	1	SPRING, BLOCK	66	51432	2	GEAR, 14T STEEL MITER (UNSPLINED)	141	50884	1	SPRING, BRAKE ARM BIAS
15	70331	1	ASSEMBLY, BLOCK	67	50766	1	SHAFT, DIFFERENTIAL	144	50974	1	O-RING, 2.987 X 3.09
		1	BLOCK, CYLINDER	68	50767	1	WASHER, THRUST 3.46 X 4.39 X .05	145	51157	1	SPRING, RELIEF
		5	PISTON	69	50768	2	BEARING, FLANGE 1.0 X 1.376 X .99	146	9001214-4400	1	BALL, 7/16 IN
		5	SPRING, COMPRESSION	71	50788	3	WASHER 1.0 X 2.25 X .04	151	50919	1	SPRING, COMP. BRAKE ANTI-DRAW
		5	WASHER, THRUST	73	50791	2	NUT, HEX 5/8-18 W/ PATCH	152	50914	1	ROD, BRAKE PULL
21	70082	1	ASSEMBLY, BLOCK	74	50771	2	BEARING, BALL 25.4 X 52 X 15	153	9005110-5600	1	PLUG, 9/16-18 (METAL)
		1	BLOCK, CYLINDER	75	50772	2	SEAL, LIP 1.0 X 2.049 X .375	155	70460	1	KIT, FAN/PULLEY
		7	PISTON	76	50663	2	SHAFT, AXLE 1.0 X 13.80 (KEY)			1	NUT, HEX LOCK 1/2-20 W/ NYLON INSERT
		7	SPRING, COMPRESSION	77	44130	6	WASHER, .34 X .88 X .06			1	WASHER, OD SLOTTED, .53 X 1.63 X .06
		7	WASHER, THRUST	79	50928	10.1oz	SEALANT			1	FAN, 7.0 IN (10 BLADE)
24	50662	1	SHAFT, MOTOR	80	50868	9	SCREW, TORX HD 5/16-18 X 1.5	157	50977	2	PULLEY, 3.86 IN
25	50552	1	BEARING, THRUST 42 X 68 X 16	81	44752	1	BEARING, NEEDLE .875 X 1.125 X 1.5	159	51463	1	O-RING, .239 X .379
26	50857	1	ARM, CONTROL	82	50777	2	WASHER, FLAT .88 X 1.25 X .04	203	70492	1	PIN, SPRING .32 X 1.75
27	50774	1	SPACER, 1.03 X 1.38 X .184	83	50775	1	RING, RETAINING			1	KIT, SEAL & O-RING
28	50661	1	GEAR, 16T PINION	84	50773	1	SEAL, LIP .875 X 1.375 X .250			1	SEAL, LIP 15 X 35 X 7
29	50975	2	SCREW, CAP M6 X 1 X 25	85	50779	1	DISK, BRAKE			1	SEAL, LIP 12 X 25 X 7
30	2000015	1	GUIDE, SLOT	86	50132	1	WASHER, .51 X 1.0 X .03			1	SEAL, LIP 10 X 25 X 7
31	50807	1	ARM, TRUNNION TAPERED SQUARE	87	50836	1	SPACER, .32 X 1.96 X .15			1	O-RING, 1.862 X 2.068
32	2003009	1	BEARING, TRUNNION	88	50837	1	SCREW, SOCKET HD CAP 5/16-24 X 1.5			2	SEAL, LIP 1.0 X 2.049 X .375
33	9008000-0126	1	SEAL, LIP 12 X 25 X 7	89	44147	1	BEARING, BALL .62 X 1.38 X .44			1	SEAL, LIP .875 X 1.375 X .250
34	50831	1	ARM, RETURN	90	51200	1	SPACER, LOCATING			2	O-RING, .239 X .379
35	51512	1	ARM, ACTUATING	92	50870	1	SCREW, COUNTERSUNK 5/16-18 X 1.0			1	KIT, O-RING, MANIFOLD
										1	PIN, SPRING .32 X 1.75
										1	PIN, SPRING .26 X 1.00



P7

REV'D ITEM #111 TO BE #112
ADD'D (QTY 3) 50016 TO ITEM #3 C/S KIT
DEL'D ITEM #2B 71139 KIT, BRAKE BOLT
REV'D ITEM #121 51927 TO 44433
REV'D ITEM #132 51928 TO 51146
REV'D ITEM #55 70538 TO 51315
04/17/06 K. RAWSKI
04/20/06 K. RAWSKI
REV'D ITEM #65 51411 TO 51431
REV'D ITEM #66 51410 TO 51432
08/22/06 J PROBST
ECN #18420