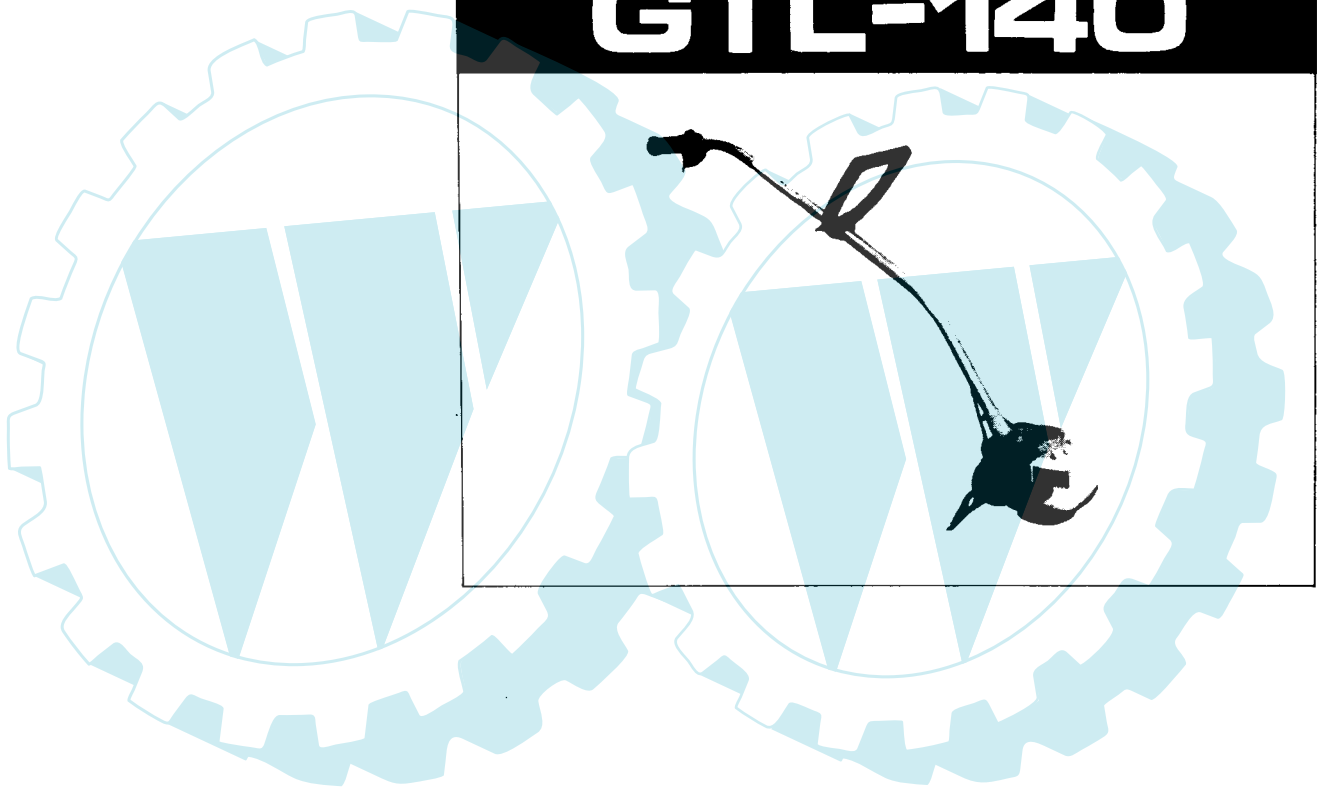


ECHO

WEED AND GRASS TRIMMER

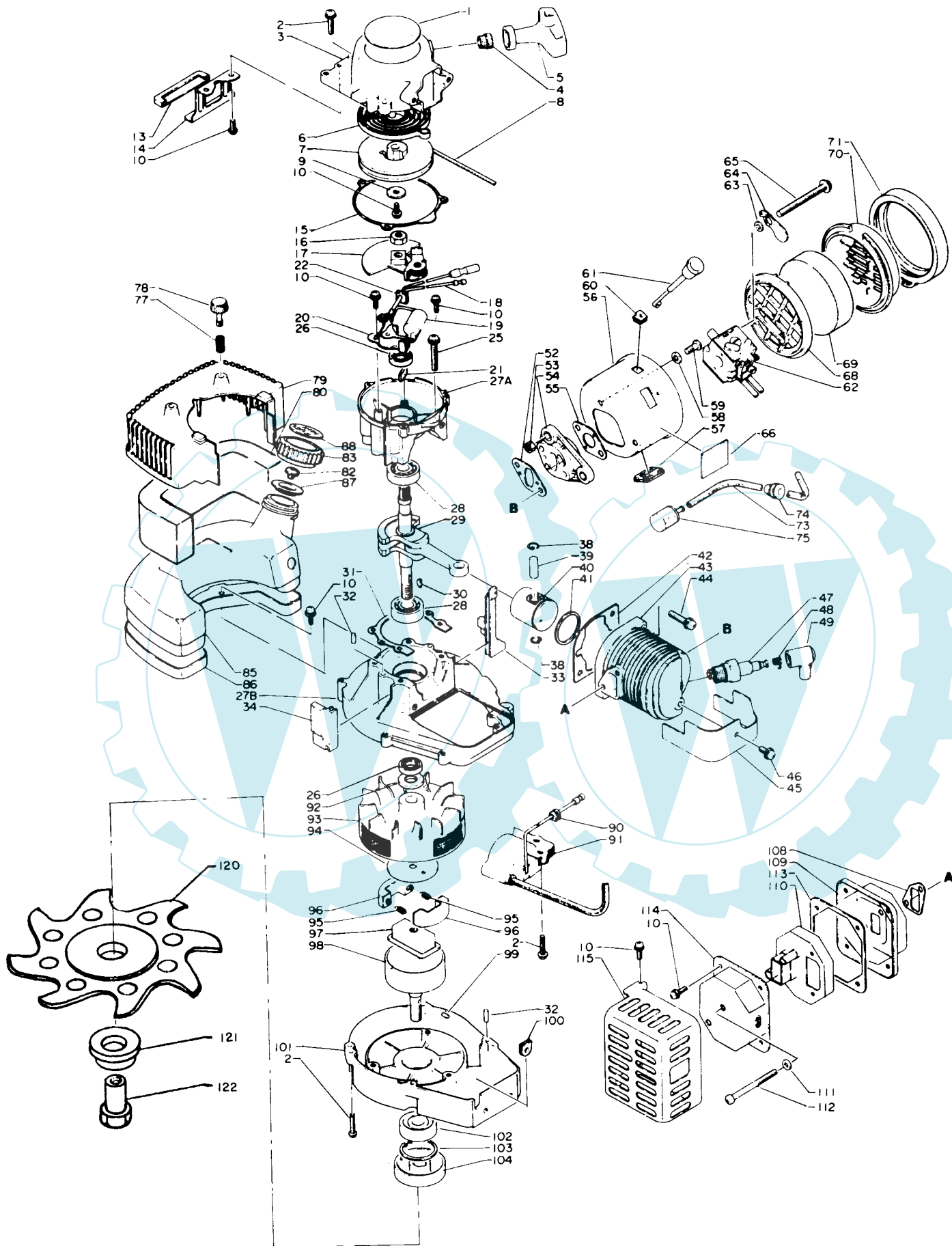
OPERATOR'S MANUAL

GTL-140



CAUTION

Read Rules for Safe Operation
and Instructions Carefully



Key No.	Part Number	O'ty	Description	Key No.	Part Number	O'ty	Description
1- 1	890 112-0603 1	1	Decal, ECHO	59	900 220-0501 2	2	Screw 5x12
2	900 242-0402 0	9	Screw 4x 20w/W, SW	60	178 810-0793 0	1	Rubber bush
*	177 200-0793 0	1	Recoil starter ass'y	61	178 510-0793 0	1	Choke rod
3	177 209-0793 0	1	Starter case	62	123 000-0793 0	1	Carburetor ass'y
4	177 227-0533 0	1	Rope guide	63	178 516-0083 0	1	Spacer
5	177 228-0653 0	1	Starter handle	64	178 515-0793 0	1	Choke shutter
6	177 220-0653 0	1	Rewind spring	65	900 242-0505 7	2	Screw 5x57w/W, SW
7	177 215-0492 0	1	Recoil drum	68	130 319-0793 0	1	Air cleaner retainer
8	177 226-0653 0	1	Starter rope	69	130 310-0793 0	1	Air filter
9	177 214-0463 0	1	Washer	70	130 313-0793 0	1	Cover, air filter
10	900 242-0401 0	13	Screw 4x 10w/W, SW	71	130 341-0793 0	1	Cap, air cleaner
13	131 920-0793 0	1	Cushion fuel tank	73	132 010-0793 0	1	Fuel pipe
14	131 910-0793 0	1	Bracket, fuel tank	74	132 115-1233 0	1	Grommet
15	100 615-0492 0	1	Gasket, starter case	75	131 205-0653 0	1	Fuel strainer
16	900 502-0000 8	1	Nut 8	77	100 626-0793 0	1	Spring
17	177 305-0492 0	1	Ratchet ass'y	78	100 624-0793 0	1	Thumb bolt
18	150 505-0793 0	1	Lead cord	79	100 616-0793 0	1	Cover
19	150 127-0492 0	1	Condenser	80	100 623-0793 0	1	Dust seal
20	150 101-0492 0	1	Contact breaker set	*****	131 004-0493 0	1	Cap ass'y, fuel tank
21	156 134-0373 0	1	Oil pad	82	131 314-0033 0	1	Check valve
22	150 114-0492 0	1	Grommet	83	131 017-0493 0	1	Cap, fuel tank
25	900 242-0503 0	4	Screw 5x x30W/W, SW	85	131 010-0793 0	1	Fuel tank
26	100 213-0593 0	2	Oil seal	86	131 918-0793 0	1	Bracket, fuel tank
**27	100 200-0492 0	1	Crankcase set	87	131 015-0493 1	1	Holder, check valve
28	900 810-3620 0	2	Ball bearing 6200	88	890 154-0393 0	1	Decal, fuel mix
29	100 100-0492 0	1	Crankshaft ass'y	90	156 114-0492 0	1	Grommet
30	100 142-0033 0	1	Woodruff key	91	150 126-0793 0	1	Ignition coil
31	100 242-0492 0	1	Gasket, crankcase	92	100 132-0653 0	1	Washer
32	100 215-0393 0	4	Knock pin	93	150 200-0492 0	1	Flyweel
33	100 614-0793 0	1	Dust seal plate (A)	94	175 019-0653 0	1	Side plate, clutch
34	100 625-0793 0	1	Dust seal plate (B)	95	175 018-0653 0	2	Spring, clutch
38	100 015-0463 0	2	Circlip, piston pin	96	175 017-0463 0	2	Shoe, clutch
39	100 013-0492 0	1	Piston pin	97	175 016-0492 0	1	Boss, clutch
40	100 010-0733 0	1	Piston	98	175 005-0793 0	1	Drum, clutch
41	100 011-0593 0	1	Piston ring	99	900 305-3000 6	1	Pin
42	101 010-0492 0	1	Gasket, cylinder base	100	156 110-0492 0	1	Rubber, grommet, H.T. cord
43	101 011-0492 0	1	Cylinder	101	101 511-0793 0	1	Fan cover
44	900 242-0602 2	2	Screw 6x 22w/W, SW	102	900 812-0620 1	1	Ball bearing 6201
45	101 514-0492 0	1	Cylinder cover	103	900 702-0003 2	1	Circlip
46	900 242-0501 0	1	Screw 5x 10w/W, SW	104	610 333-0793 0	1	Plate, blade fixing
47	159 010-0033 0	1	Spark plug	108	145 510-0492 0	1	Gasket, muffler
48	159 011-0051 0	1	Coil spring, spark plug cap	*****	145 900-0793 0	1	Muffler ass'y
49	159 012-0162 0	1	Cap, spark plug	109	145 806-0793 0	1	Muffler
52	130 010-0492 1	1	Gasket, carburetor	110	145 807-0793 0	1	Silencer
53	900 500-0000 5	2	Nut 5	111	900 602-0000 5	2	Washer
54	130 017-0793 0	1	Insulator	112	900 220-0505 2	2	Screw 5x52
55	130 016-0492 1	1	Gasket, carburetor	113	145 866-0793 0	1	Gasket, muffler lid
***56	130 306-0793 0	1	Carburetor case	114	145 861-0793 0	1	Muffler, lid
57	129 010-0793 0	1	Rubber grommet	115	145 621-0793 0	1	Muffler cover
58	900 605-0000 5	2	Spring washer 5	120	696 014-0793 1	1	Cutter
				121	610 314-0793 1	1	Plate
				122	610 320-0793 1	1	Nut

Remarks

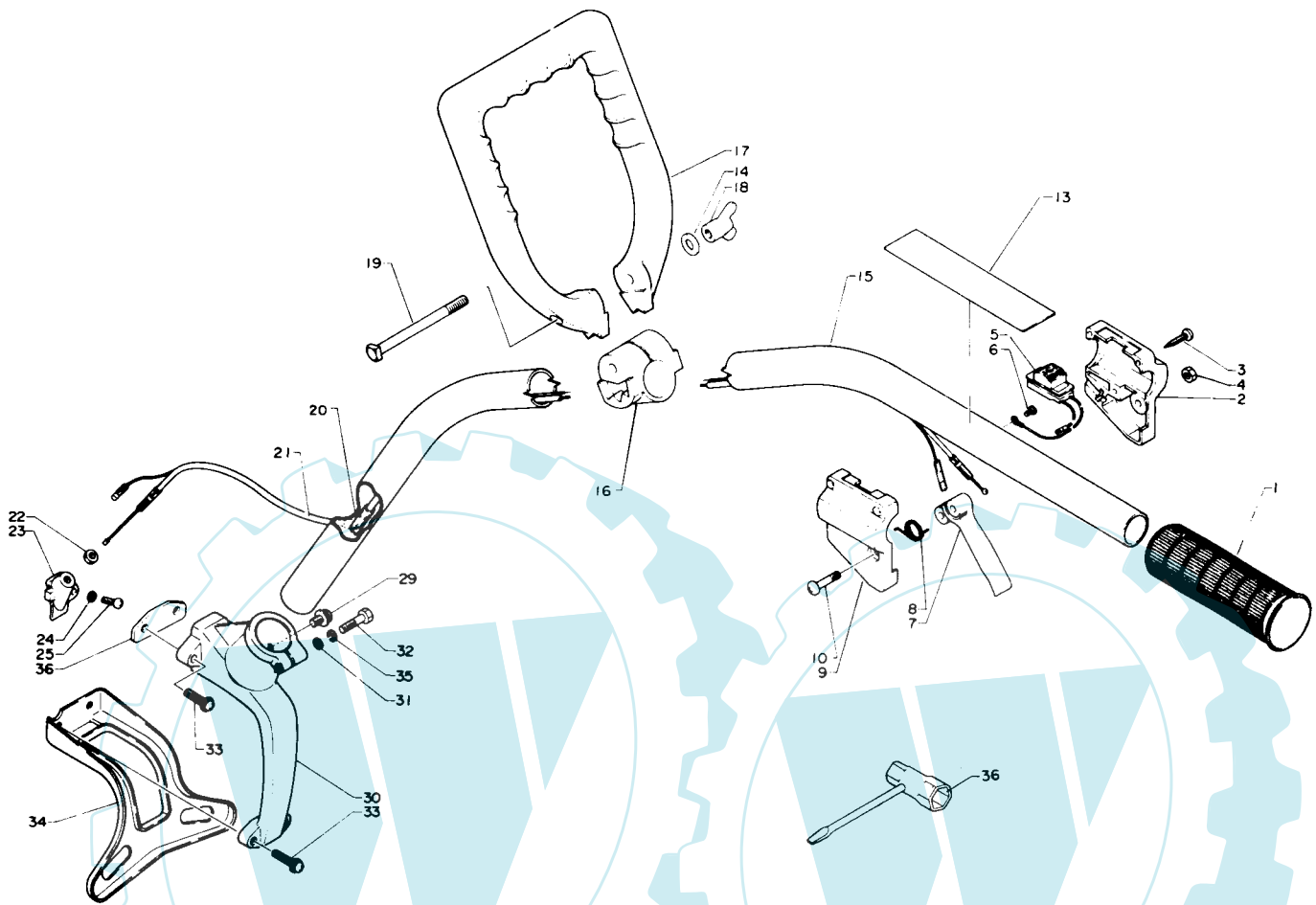
* Consisting of 3 thru 9 and 10

** Consisting of 27 and 32

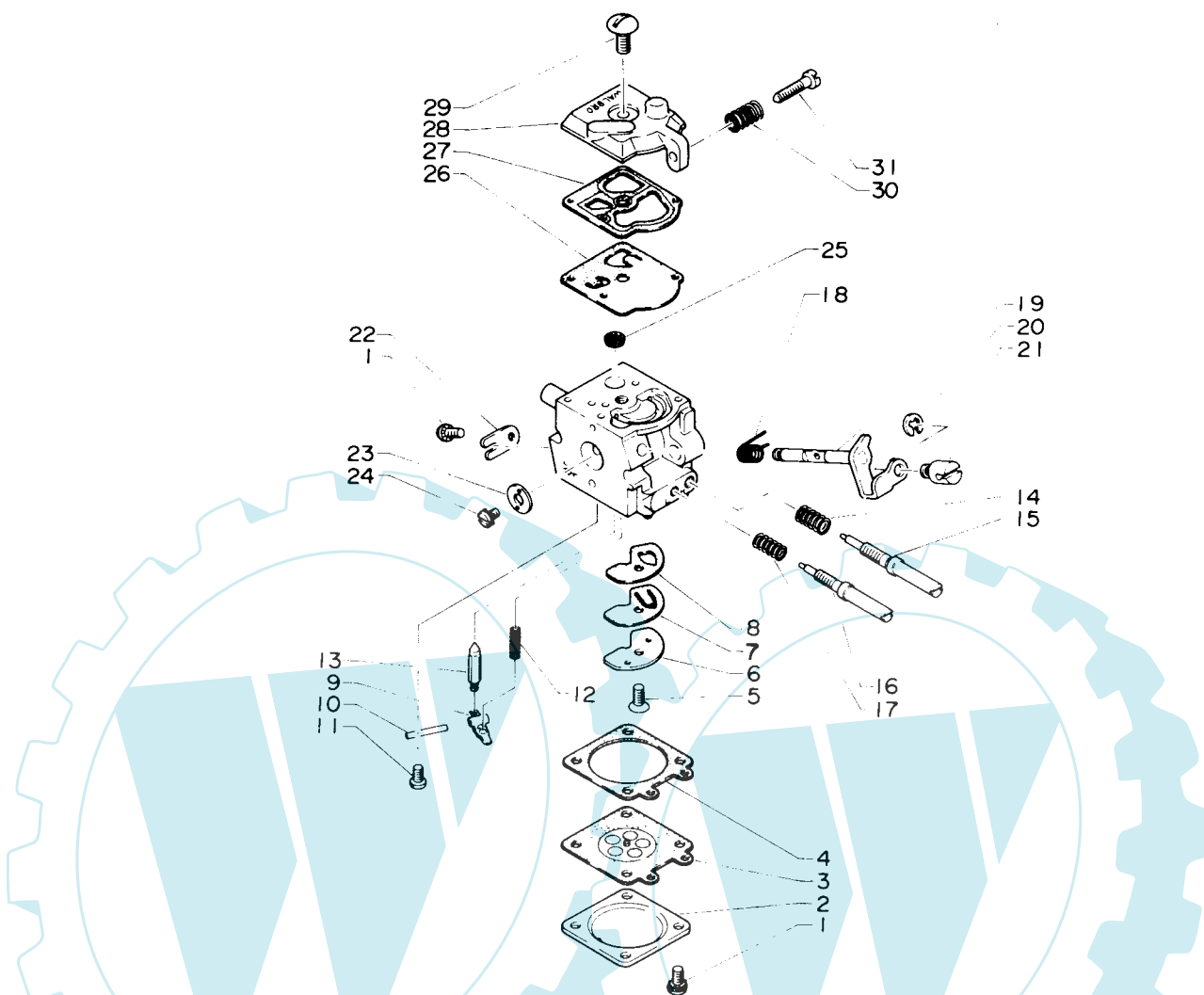
*** Consisting of 56,57 and 60

**** Consisting of 82, 83 and 87

***** Consisting of 10 and 109 thru 110, 113, 114



Key No.	Part Number	O'ty	Description	Key No.	Part Number	O'ty	Description
2- 1	351 012-0793 0	1	Grip	19	351 218-0793 0	1	Bolt
2	178 052-0793 0	1	Bracket, throttle trigger (B)	20	178 016-0793 0	1	Cover, throttle cable
3	900 245-0402 5	3	Screw 4x25	21	178 001-0793 0	1	Throttle cable
4	433 020-0083 0	1	Lock nut 5	22	900 502-0000 6	1	Nut 6
5	163 400-0793 0	1	Switch	23	178 132-0793 0	1	Holder, throttle cable
6	900 247-0400 8	1	Screw 4x8	24	900 602-0000 4	1	Washer 4
7	178 010-0793 0	1	Throttle trigger	25	900 220-0401 2	1	Screw 4x12
8	178 043-0793 0	1	Spring, throttle return	26	900 602-0000 6	1	Washer 6
9	178 024-0793 0	1	Bracket, throttle trigger (A)	29	900 242-0501 0	1	Screw 5x10w/W, SW
10	178 110-0533 0	1	Screw	30	610 223-0793 0	1	Holder, operation rod
14	900 602-0000 6	1	Washer 6	31	900 600-0000 5	1	Washer 5
15	610 210-0793 0	1	Operation rod	32	900 150-0502 5	1	Bolt 5x25
16	351 225-0793 0	1	Bracket, handle	33	900 242-0502 0	4	Screw 5x20w/W, SW
17	351 214-0793 0	1	Handle	34	305 110-0793 0	1	Stand
18	900 520-0000 6	1	Butterfly nut 6	35	900 605-0000 5	1	Spring washer 5
				36	890 410-0793 0	1	Wrench



Key No.	Part Number	O'ty	Description	Key No.	Part Number	O'ty	Description
3- *	123 000-0793 0	1	Carburetor ass'y	15	123 118-0793 0	1	Needle, idle
1	123 144-0393 0	5	Screw	16	123 120-0793 0	1	Needle, high speed
2	123 142-0393 0	1	Cover, metering diaphragm	17	123 119-0393 0	1	Spring, H.S. needle
3	123 141-0393 0	1	Diaphragm, metering	18	123 113-0393 0	1	Spring, throttle return
4	123 140-0393 0	1	Gasket, metering diaphragm	19	123 117-0793 0	1	Shaft ass'y, throttle
5	123 167-0523 0	1	Screw, circuit plate	20	123 173-0793 0	1	Clip
6	123 166-0393 0	1	Plate, circuit	21	123 172-0432 0	1	Swivel
7	123 165-0393 0	1	Diaphragm, circuit plate	22	123 127-0393 0	1	Clip, throttle shaft
8	123 164-0393 0	1	Gasket, circuit plate	23	123 116-0653 0	1	Valve, throttle
9	123 123-0393 0	1	Metering lever	24	123 114-0393 0	1	Screw, throttle valve
10	123 138-0393 0	1	Pin, metering lever	25	123 126-0393 0	1	Screen, inlet
11	123 139-0393 0	1	Screw, metering lever pin	26	123 112-0393 0	1	Diaphragm, fuel pump
12	123 122-0653 0	1	Spring, metering lever	27	123 125-0393 0	1	Gasket, fuel pump
13	123 137-0393 0	1	Valve, inlet needle	28	123 124-0793 0	1	Cover, fuel pump
14	123 121-0393 0	1	Spring, idle needle	29	123 110-0393 0	1	Screw, pump cover
				30	123 133-0393 0	1	Spring, idle screw
				31	123 134-0393 0	1	Screw, idle adjustment

Remarks

* Consisting of 1 thru 31