



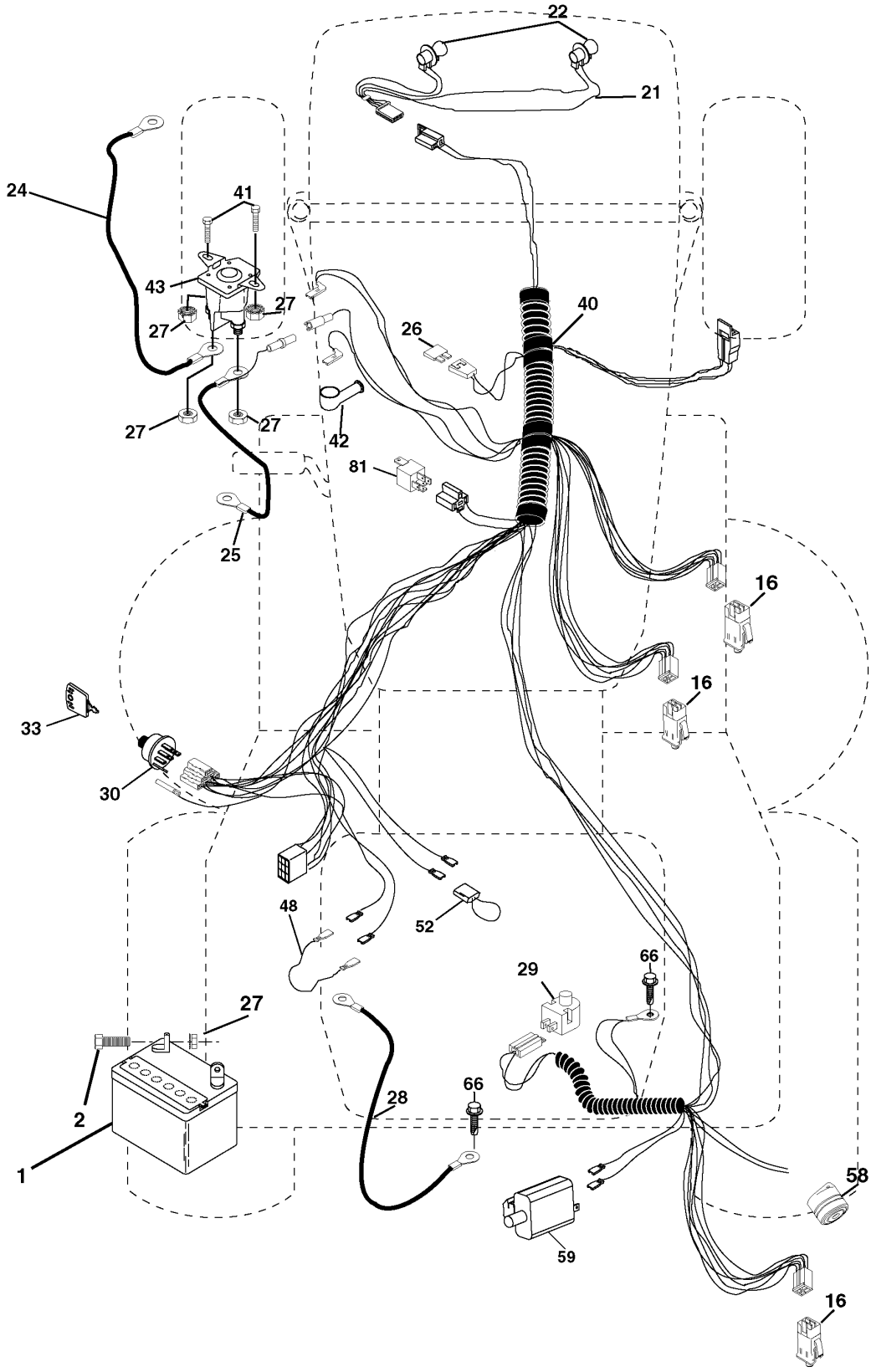
SPARE PARTS LIST

TRACTORS/RIDE MOWERS

ICT 14, JICT14C, 954130079, 2002-06

REPAIR PARTS

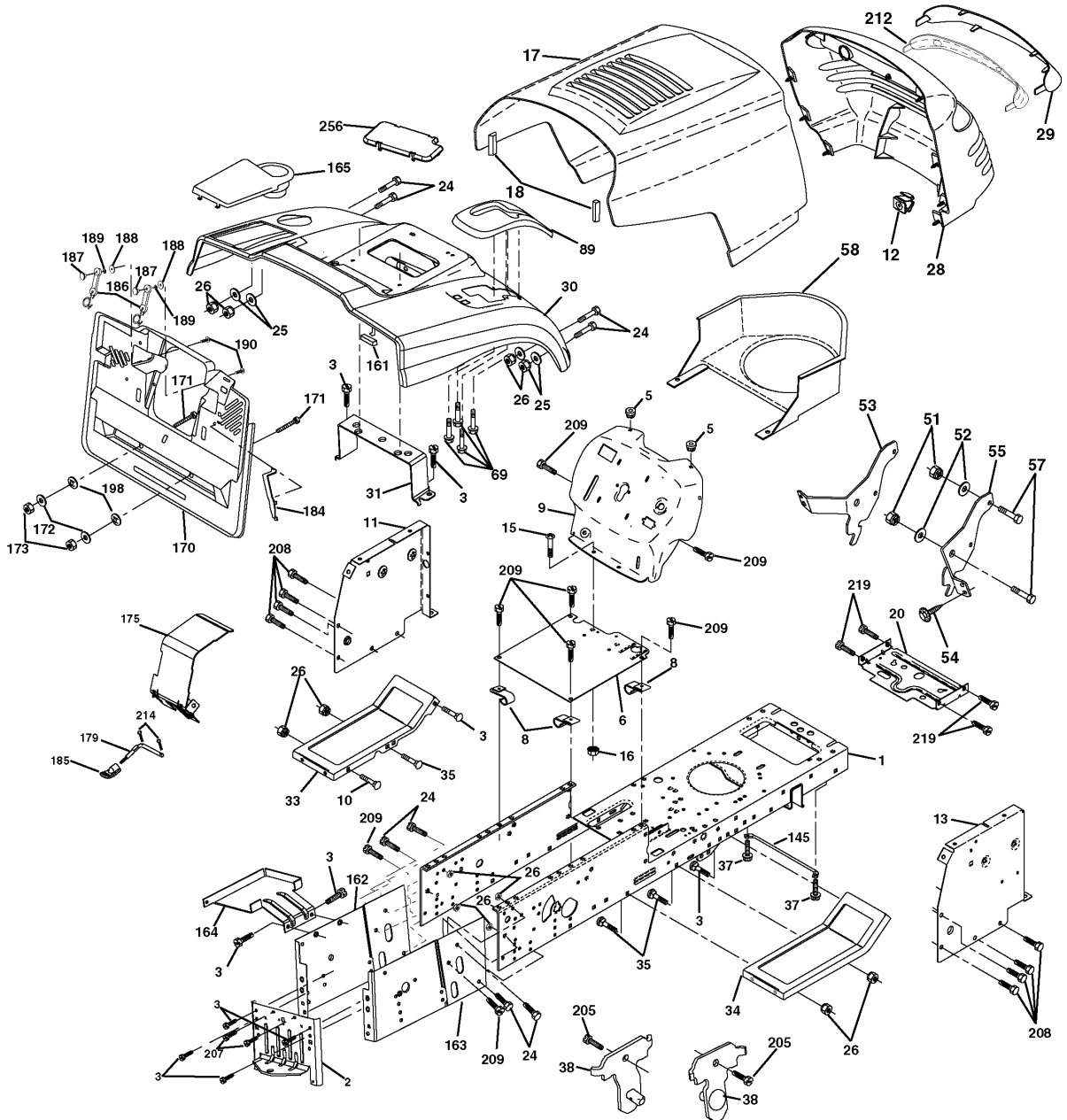
TRACTOR- -MODEL NO. ICT14 (JICT14C) PRODUCT NO. 954 13 00-79
ELECTRICAL



| Referenz | Teile Nr | Beschreibung | Bemerkung: | ANZ KIT |
|----------|--------------|------------------|------------|---------|
| 1 | 532 16 34-65 | BATTERIE | | 1 |
| 2 | 874 76 04-12 | BOLZEN | | 1 |
| 16 | 532 17 61-38 | SWITCH INTERLOCK | | 1 |
| 21 | 532 17 56-88 | TRAGEGURT | | 1 |
| 22 | 532 00 41-52 | LAMPE | | 1 |
| 24 | 532 12 47-80 | KABEL | | 1 |
| 25 | 532 16 59-87 | KABEL | | 1 |
| 26 | 532 17 51-58 | SICHERUNG | | 1 |
| 27 | 873 51 04-00 | MUTTER | | 1 |
| 28 | 532 12 77-25 | KABEL | | 1 |
| 29 | 532 16 07-84 | SCHALTER | | 1 |
| 30 | 532 17 55-66 | SCHALTER | | 1 |
| 33 | 532 14 04-01 | TASTE | | 1 |
| 40 | 532 17 97-28 | TRAGEGURT | | 1 |
| 41 | 871 11 04-08 | BOLZEN | | 1 |
| 42 | 532 13 15-63 | DECKEL | | 1 |
| 43 | 532 17 88-61 | ELEKTROMAGNET | | 1 |
| 48 | 532 14 08-44 | ADAPTER | | 1 |
| 52 | 532 14 19-40 | PROTECTOR | | 1 |
| 58 | 532 16 94-19 | SUMMER | | 1 |
| 59 | 532 18 03-79 | SWITCH FBI | | 1 |
| 66 | 817 49 06-08 | SCHRAUBE | | 1 |
| 81 | 532 10 97-48 | RELAIS | | 1 |

REPAIR PARTS

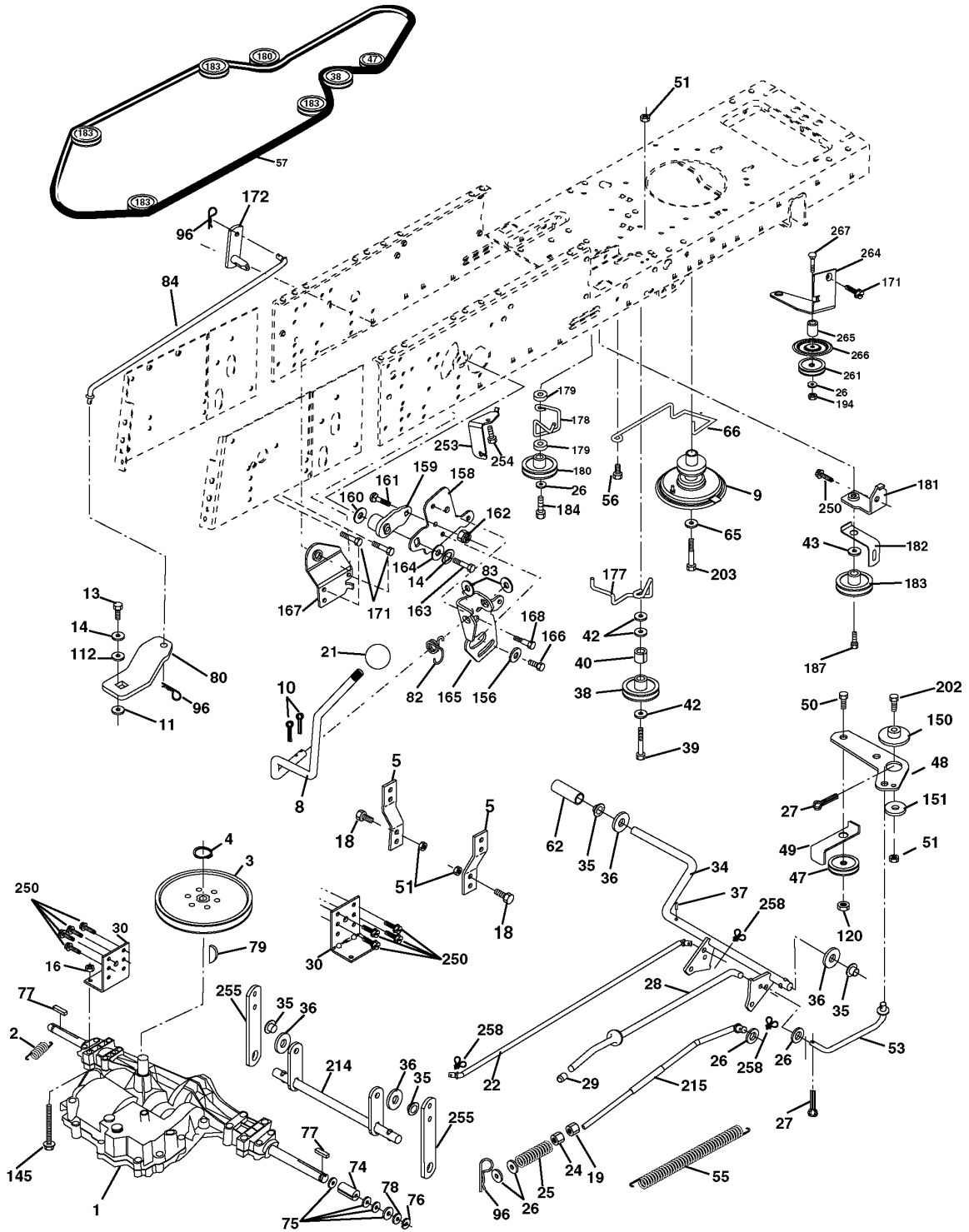
TRACTOR- -MODEL NO. ICT14 (JICT14C) PRODUCT NO. 954 13 00-79
CHASSIS AND ENCLOSURES



| Referenz | Teile Nr | Beschreibung | Bemerkung: | ANZ KIT |
|----------|--------------|----------------|------------|---------|
| 1 | 532 17 46-20 | RAHMEN | | 1 |
| 2 | 532 18 03-84 | DRAWBAR | | 1 |
| 3 | 817 06 06-12 | SCHRAUBE | | 1 |
| 5 | 532 15 52-72 | DÄMPFER | | 1 |
| 6 | 532 15 59-23 | PLATTE | | 1 |
| 8 | 532 12 64-71 | KLAMMER | | 1 |
| 9 | 532 17 22-43 | SCHALTBRETT | | 1 |
| 10 | 872 14 06-08 | BOLZEN | | 1 |
| 11 | 532 17 49-96 | PLATTE | | 1 |
| 12 | 532 14 56-60 | KLAMMER | | 1 |
| 13 | 532 17 21-06 | SCHALTBRETT | | 1 |
| 15 | 874 18 05-12 | SCHRAUBE | | 1 |
| 16 | 873 51 05-00 | MUTTER | | 1 |
| 17 | 532 15 07-60 | HAUBE | | 1 |
| 18 | 532 12 69-38 | DÄMPFER | | 1 |
| 20 | 532 18 06-79 | PLATTE | | 1 |
| 24 | 874 78 06-16 | BOLZEN | | 1 |
| 25 | 819 13 13-12 | SCHEIBE | | 1 |
| 26 | 873 80 06-00 | MUTTER | | 1 |
| 28 | 532 17 93-51 | GRILLE | | 1 |
| 29 | 532 17 90-14 | LINSE | | 1 |
| 30 | 532 18 13-59 | RADABDECKUNG | | 1 |
| 31 | 532 16 51-56 | HALTER | | 1 |
| 33 | 532 18 11-93 | PLATTE | | 1 |
| 34 | 532 18 11-94 | PLATTE | | 1 |
| 35 | 872 11 06-06 | BOLZEN | | 1 |
| 37 | 817 49 05-08 | SCHRAUBE | | 1 |
| 38 | 532 18 17-48 | HALTER | | 1 |
| 51 | 873 80 04-00 | MUTTER | | 1 |
| 52 | 819 09 14-16 | SCHEIBE | | 1 |
| 53 | 532 14 52-01 | HALTER | | 1 |
| 54 | 532 16 14-64 | SCHRAUBE | | 1 |
| 55 | 532 14 52-02 | HALTER | | 1 |
| 57 | 874 78 04-12 | BOLZEN | | 1 |
| 69 | 532 14 24-32 | SCHRAUBE | | 1 |
| 89 | 532 18 13-88 | BEFESTIGUNG | | 1 |
| 145 | 532 15 65-24 | WELLE | | 1 |
| 161 | 532 16 46-55 | DÄMPFER | | 1 |
| 162 | 532 18 03-82 | HALTER | | 1 |
| 163 | 532 18 03-83 | HALTER | | 1 |
| 164 | 532 16 56-05 | STÜTZE | | 1 |
| 165 | 532 18 13-56 | DECKEL | | 1 |
| 170 | 532 17 88-62 | PLATTE | | 1 |
| 171 | 872 14 06-20 | BOLZEN | | 1 |
| 172 | 819 13 20-16 | SCHEIBE | | 1 |
| 173 | 873 51 06-00 | MUTTER | | 1 |
| 175 | 532 18 03-10 | SCHUTZ | | 1 |
| 179 | 532 18 03-76 | STANGE | | 1 |
| 184 | 532 17 46-62 | HALTER | | 1 |
| 185 | 532 18 11-01 | KNOPF | | 1 |
| 186 | 532 16 07-93 | SPERRHAKEN | | 1 |
| 187 | 532 12 50-04 | MUTTER | | 1 |
| 188 | 819 06 12-16 | SCHEIBE | | 1 |
| 189 | 810 07 10-00 | SCHEIBE | | 1 |
| 190 | 871 08 10-10 | SCHRAUBE | | 1 |
| 198 | 532 16 89-37 | SCHEIBE | | 1 |
| 205 | 817 49 06-08 | SCHRAUBE | | 1 |
| 207 | 817 67 05-08 | SCHRAUBE | | 1 |
| 208 | 817 67 06-08 | SCHRAUBE | | 1 |
| 209 | 817 00 06-12 | SCHRAUBE | | 1 |
| 212 | 532 16 59-19 | EINSATZ | | 1 |
| 214 | 532 12 47-88 | RETAINING RING | | 1 |
| 219 | 817 00 05-12 | SCHRAUBE | | 1 |
| 256 | 532 18 13-61 | DECKEL | | 1 |

REPAIR PARTS

TRACTOR- -MODEL NO. ICT14 (JICT14C) PRODUCT NO. 954 13 00-79
DRIVE

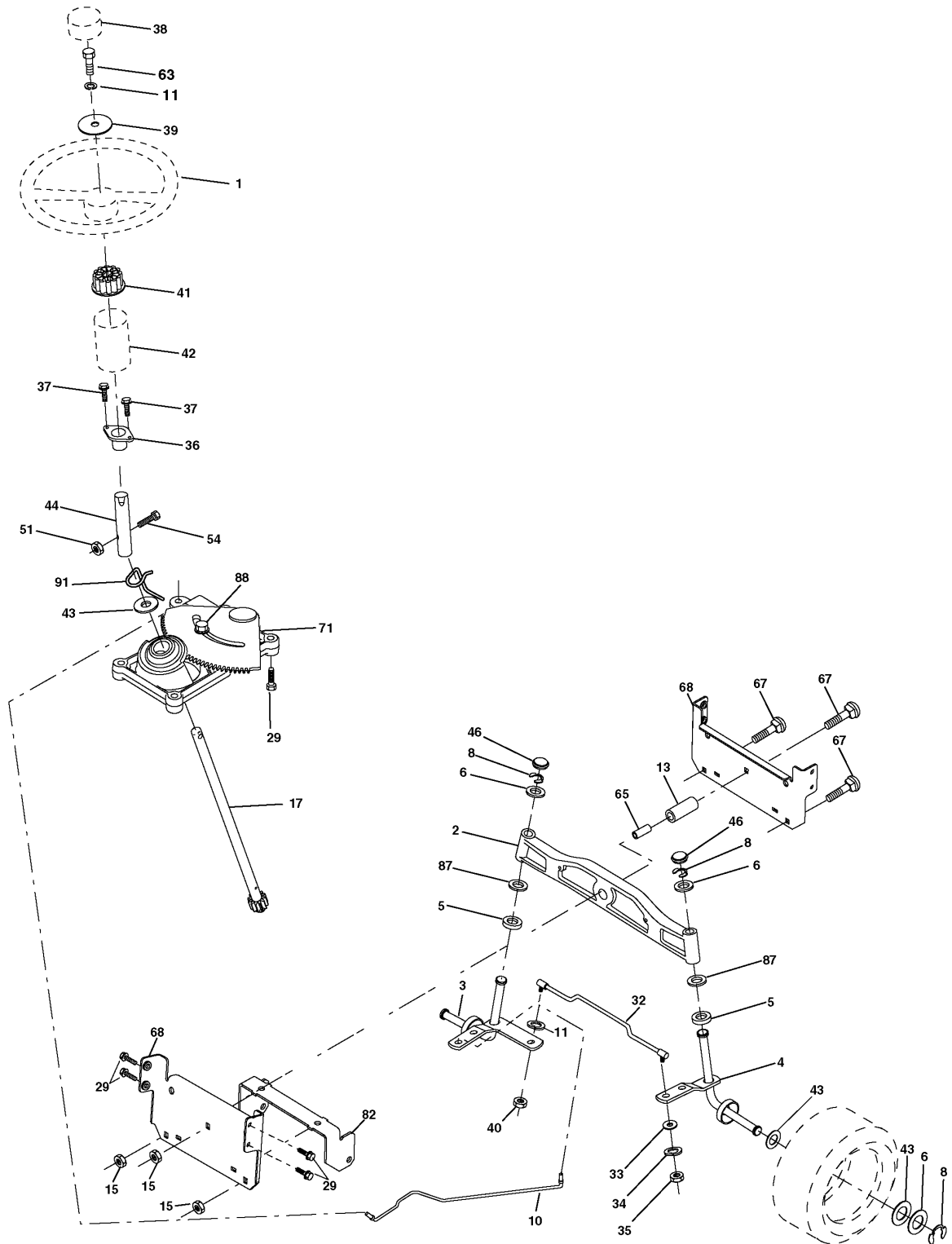


| Referenz | Teile Nr | Beschreibung | Bemerkung: | ANZ KIT |
|----------|--------------|---------------------|------------|---------|
| 2 | 532 14 66-82 | FEDER | | 1 |
| 3 | 532 16 59-99 | RIEMENSCHLEIBE | | 1 |
| 4 | 812 00 00-28 | KLAMMER | | 1 |
| 5 | 532 12 15-20 | HALTER | | 1 |
| 8 | 532 16 56-19 | STANGE | | 1 |
| 9 | 532 18 03-54 | KUPPLUNG | | 1 |
| 10 | 876 02 04-16 | SPANNHÜLSE | | 1 |
| 11 | 532 10 57-01 | SCHEIBE | | 1 |
| 13 | 874 55 04-12 | BOLZEN | | 1 |
| 14 | 810 04 04-00 | SCHEIBE | | 1 |
| 16 | 873 80 05-00 | LOCK NUT | | 1 |
| 18 | 874 78 06-16 | BOLZEN | | 1 |
| 19 | 873 80 06-00 | MUTTER | | 1 |
| 21 | 532 10 69-33 | KNOPF | | 1 |
| 22 | 532 17 56-07 | STANGE | | 1 |
| 24 | 873 35 06-00 | MUTTER | | 1 |
| 25 | 532 10 68-88 | FEDER | | 1 |
| 26 | 819 13 13-16 | SCHEIBE | | 1 |
| 27 | 876 02 04-12 | SPANNHÜLSE | | 1 |
| 28 | 532 17 57-65 | WELLE | | 1 |
| 29 | 532 07 16-73 | DECKEL | | 1 |
| 30 | 532 17 49-73 | HALTER | | 1 |
| 34 | 532 17 55-78 | WELLE | | 1 |
| 35 | 532 12 01-83 | LAGER | | 1 |
| 36 | 819 21 16-16 | SCHEIBE | | 1 |
| 37 | 532 12 49-63 | PIN RETAINING SCREW | | 1 |
| 38 | 532 16 59-36 | RIEMENSCHLEIBE | | 1 |
| 39 | 874 76 06-44 | BOLZEN | | 1 |
| 40 | 532 12 49-65 | ABSTANDSSCHLEIBE | | 1 |
| 42 | 819 13 13-12 | SCHEIBE | | 1 |
| 43 | 819 11 10-12 | SCHEIBE | | 1 |
| 47 | 532 12 77-83 | RIEMENSCHLEIBE | | 1 |
| 48 | 532 15 44-07 | FÜHRUNG | | 1 |
| 49 | 532 12 32-05 | RIEMENFÜHRUNG | | 1 |
| 50 | 874 76 06-24 | BOLZEN | | 1 |
| 51 | 873 68 06-00 | MUTTER | | 1 |
| 53 | 532 10 57-10 | GELENK | | 1 |
| 55 | 532 10 57-09 | FEDER | | 1 |
| 56 | 817 06 06-20 | SCHRAUBE | | 1 |
| 57 | 532 16 56-31 | RIEMEN | | 1 |
| 62 | 532 12 48-72 | PEDAL RUBBER | | 1 |
| 65 | 810 04 07-00 | SCHEIBE | | 1 |
| 66 | 532 15 47-78 | SPANNER | | 1 |
| 74 | 532 13 70-57 | ABSTANDSSCHLEIBE | | 1 |
| 75 | 532 12 17-49 | SCHEIBE | | 1 |
| 76 | 812 00 00-01 | SPRENGRING | | 1 |
| 77 | 532 12 35-83 | TASTE | | 1 |
| 78 | 532 12 17-48 | SCHEIBE | | 1 |
| 79 | 532 12 50-96 | SCHEIBENFEDER | | 1 |
| 80 | 532 14 50-90 | HEBEL | | 1 |
| 82 | 532 16 57-11 | FEDER | | 1 |
| 83 | 819 17 12-16 | SCHEIBE | | 1 |
| 84 | 532 16 56-21 | GELENK | | 1 |
| 96 | 532 12 47-88 | RETAINING RING | | 1 |
| 112 | 819 09 12-10 | SCHEIBE | | 1 |
| 120 | 873 90 06-00 | MUTTER | | 1 |
| 145 | 874 49 05-40 | BOLZEN | | 1 |
| 150 | 532 16 58-50 | BUSHING | | 1 |
| 151 | 819 13 32-10 | SCHEIBE | | 1 |
| 156 | 532 16 60-02 | SCHEIBE | | 1 |
| 158 | 532 16 55-89 | HALTER | | 1 |
| 159 | 532 16 54-94 | HEBEL | | 1 |
| 160 | 819 29 20-16 | SCHEIBE | | 1 |
| 161 | 872 14 04-06 | BOLZEN | | 1 |

| Referenz | Teile Nr | Beschreibung | Bemerkung: | ANZ KIT |
|----------|--------------|------------------|------------|---------|
| 162 | 873 68 04-00 | MUTTER | | 1 |
| 163 | 874 78 04-16 | BOLZEN | | 1 |
| 164 | 819 09 10-10 | SCHEIBE | | 1 |
| 165 | 532 16 56-23 | HALTER | | 1 |
| 166 | 532 16 68-80 | SCHRAUBE | | 1 |
| 167 | 532 16 55-88 | HALTER | | 1 |
| 168 | 532 16 54-92 | BOLZEN | | 1 |
| 171 | 817 49 06-08 | SCHRAUBE | | 1 |
| 172 | 532 16 56-35 | WELLE | | 1 |
| 177 | 532 16 59-32 | HOLDER | | 1 |
| 178 | 532 16 59-33 | HOLDER | | 1 |
| 179 | 532 12 09-58 | SCHEIBE | | 1 |
| 180 | 532 16 56-30 | RIEMENSCHLEIBE | | 1 |
| 181 | 532 18 02-11 | HALTER | | 1 |
| 182 | 532 18 26-82 | RIEMENFÜHRUNG | | 1 |
| 183 | 532 17 90-50 | RIEMENSCHLEIBE | | 1 |
| 184 | 817 49 06-44 | SCHRAUBE | | 1 |
| 187 | 817 58 05-20 | BOLZEN | | 1 |
| 202 | 872 11 06-14 | BOLZEN | | 1 |
| 203 | 871 17 07-80 | BOLZEN | | 1 |
| 214 | 532 17 56-09 | HEBEL | | 1 |
| 215 | 532 17 56-51 | STANGE | | 1 |
| 250 | 817 06 06-12 | SCHRAUBE | | 1 |
| 253 | 532 17 50-28 | HALTER | | 1 |
| 254 | 817 06 06-16 | SCHRAUBE | | 1 |
| 255 | 532 17 56-08 | WELLE | | 1 |
| 258 | 532 17 80-62 | KLAMMER | | 1 |
| 261 | 532 13 14-94 | RIEMENSCHLEIBE | | 1 |
| 264 | 532 18 19-95 | HALTER | | 1 |
| 265 | 532 18 20-13 | ABSTANDSSCHLEIBE | | 1 |
| 266 | 532 18 20-61 | PROTECTOR | | 1 |
| 267 | 872 14 06-26 | BOLZEN | | 1 |

REPAIR PARTS

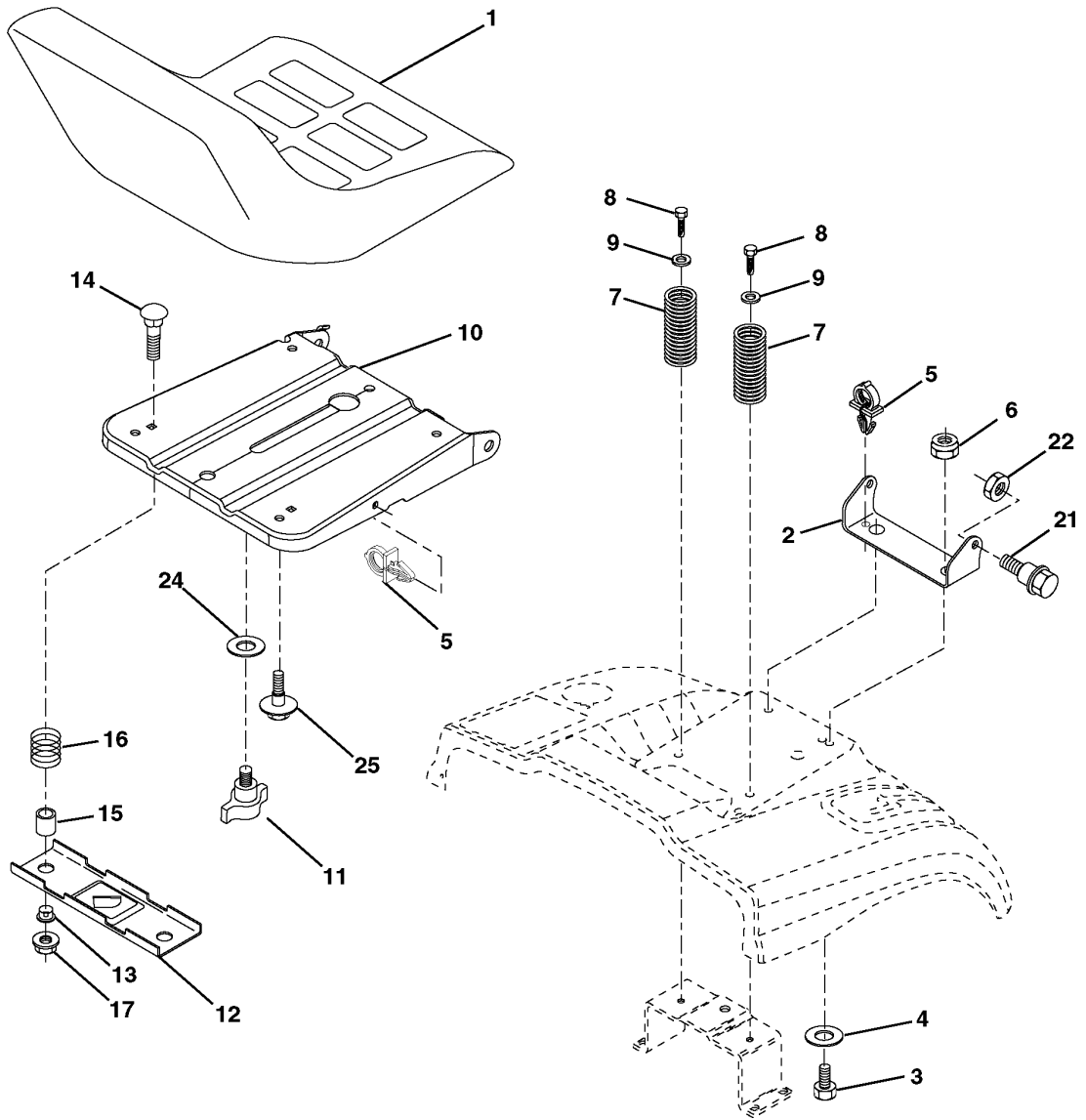
TRACTOR- -MODEL NO. ICT14 (JICT14C) PRODUCT NO. 954 13 00-79
STEERING ASSEMBLY



| Referenz | Teile Nr | Beschreibung | Bemerkung: | ANZ KIT |
|----------|--------------|-----------------|------------|---------|
| 1 | 532 17 20-92 | LENKRAD | | 1 |
| 2 | 532 17 23-93 | WELLE | | 1 |
| 3 | 532 16 98-40 | SPINDEL | | 1 |
| 4 | 532 16 98-39 | SPINDEL | | 1 |
| 5 | 532 12 49-31 | SCHEIBE | | 1 |
| 6 | 532 12 17-48 | SCHEIBE | | 1 |
| 8 | 812 00 00-29 | SPRENGRING | | 1 |
| 10 | 532 17 51-21 | STANGE | | 1 |
| 11 | 810 04 06-00 | SCHEIBE | | 1 |
| 13 | 532 13 65-18 | ROHR | | 1 |
| 15 | 532 14 52-12 | MUTTER | | 1 |
| 17 | 532 17 78-76 | WELLE | | 1 |
| 29 | 817 06 06-12 | SCHRAUBE | | 1 |
| 32 | 532 17 01-62 | STANGE | | 1 |
| 33 | 819 11 12-16 | SCHEIBE | | 1 |
| 34 | 810 04 05-00 | SCHEIBE | | 1 |
| 35 | 873 54 05-00 | MUTTER | | 1 |
| 36 | 532 15 50-99 | BUSHING | | 1 |
| 37 | 532 15 29-27 | SCHRAUBE | | 1 |
| 38 | 532 17 20-93 | DECKEL | | 1 |
| 39 | 819 13 24-11 | SCHEIBE | | 1 |
| 40 | 532 12 47-01 | MUTTER | | 1 |
| 41 | 532 15 99-45 | ADAPTER | | 1 |
| 42 | 532 16 96-33 | HÜLSE | | 1 |
| 43 | 532 12 17-49 | SCHEIBE | | 1 |
| 44 | 532 15 37-20 | STEERING PINION | | 1 |
| 46 | 532 12 12-32 | RADKAPPE | | 1 |
| 51 | 873 80 05-00 | LOCK NUT | | 1 |
| 54 | 874 78 05-20 | BOLZEN | | 1 |
| 63 | 874 78 06-16 | BOLZEN | | 1 |
| 65 | 532 16 03-67 | ABSTANDSSCHEIBE | | 1 |
| 67 | 872 14 06-18 | BOLZEN | | 1 |
| 68 | 532 16 98-27 | WELLE | | 1 |
| 71 | 532 17 51-46 | STEERING GEAR | | 1 |
| 82 | 532 16 98-35 | HALTER | | 1 |
| 87 | 532 17 39-66 | SCHEIBE | | 1 |
| 88 | 532 17 51-18 | BOLZEN | | 1 |
| 91 | 532 17 55-53 | FEDER | | 1 |

REPAIR PARTS

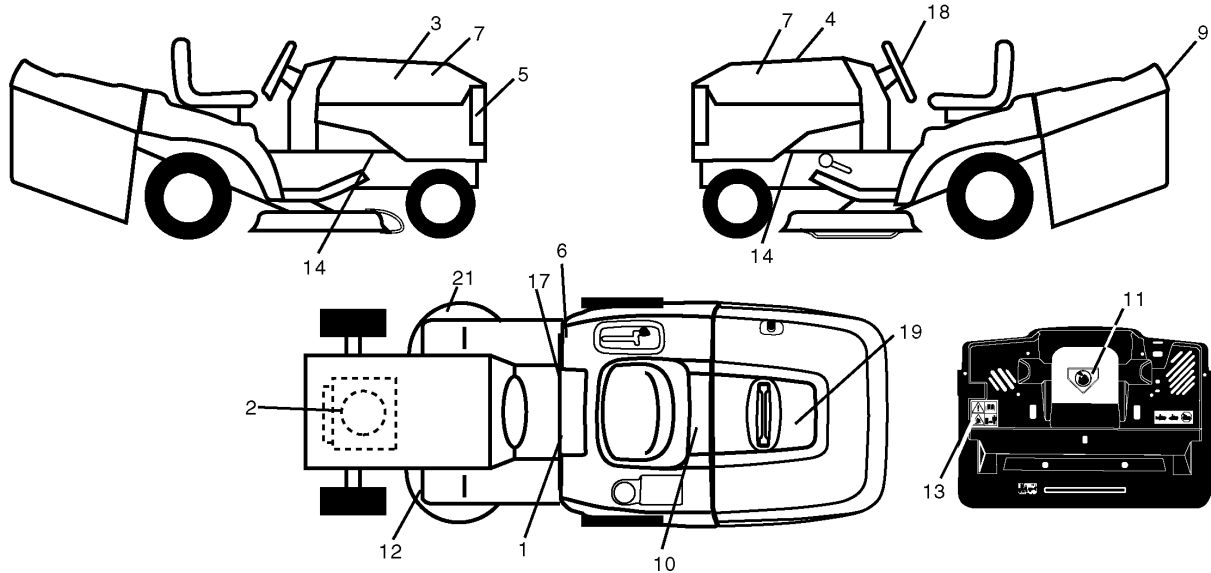
TRACTOR- -MODEL NO. ICT14 (JICT14C) PRODUCT NO. 954 13 00-79
SEAT ASSEMBLY



| Referenz | Teile Nr | Beschreibung | Bemerkung: | ANZ KIT |
|----------|--------------|-----------------|------------|---------|
| 1 | 532 14 01-17 | SITZ | | 1 |
| 2 | 532 14 05-51 | HALTER | | 1 |
| 3 | 871 11 06-16 | SCHRAUBE | | 1 |
| 4 | 819 13 16-10 | SCHEIBE | | 1 |
| 5 | 532 14 50-06 | KLAMMER | | 1 |
| 6 | 873 80 06-00 | MUTTER | | 1 |
| 7 | 532 12 41-81 | FEDER | | 1 |
| 8 | 817 00 06-16 | SCHRAUBE | | 1 |
| 9 | 819 13 16-14 | SCHEIBE | | 1 |
| 10 | 532 18 24-93 | HALTER | | 1 |
| 11 | 532 16 63-69 | FLÜGELMUTTER | | 1 |
| 12 | 532 12 12-46 | HALTER | | 1 |
| 13 | 532 12 12-48 | BUSHING | | 1 |
| 14 | 872 05 04-12 | BOLZEN | | 1 |
| 15 | 532 13 43-00 | ABSTANDSSCHEIBE | | 1 |
| 16 | 532 12 12-50 | FEDER | | 1 |
| 17 | 532 12 39-76 | LOCKNUT | | 1 |
| 21 | 532 17 18-52 | BOLZEN | | 1 |
| 22 | 873 80 05-00 | LOCK NUT | | 1 |
| 24 | 819 17 19-12 | SCHEIBE | | 1 |
| 25 | 532 12 70-18 | BOLZEN | | 1 |

REPAIR PARTS

TRACTOR- -MODEL NO. ICT14 (JICT14C) PRODUCT NO. 954 13 00-79
DECALS

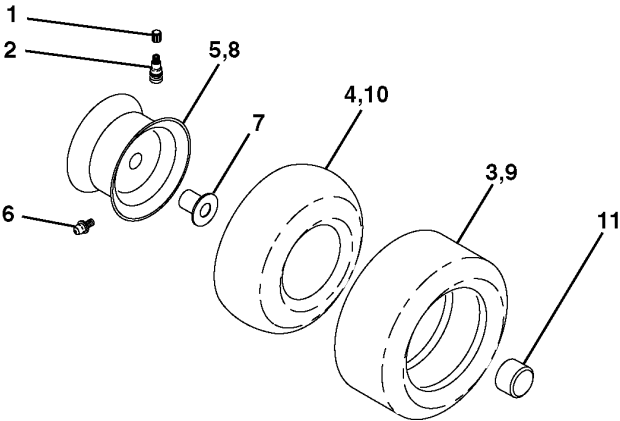


| Referenz | Teile Nr | Beschreibung | Bemerkung: | ANZ KIT |
|----------|--------------|--------------------------|------------|---------|
| 1 | 532 14 54-98 | Folie | | 1 |
| 2 | 532 18 04-31 | DECALC.VOLUTE MOTEUR | | 1 |
| 3 | 532 17 96-19 | DECALC.CAPOT COTE DROIT | | 1 |
| 4 | 532 17 96-20 | DECALC.CAPOT COTE GAUCHE | | 1 |
| 5 | 532 15 22-62 | Folie | | 1 |
| 6 | 532 18 04-32 | Folie | | 1 |
| 7 | 532 16 29-27 | Folie | | 1 |
| 9 | 532 14 17-61 | Folie | | 1 |
| 10 | 532 14 50-05 | Folie | | 1 |
| 11 | 532 18 21-66 | Folie | | 1 |
| 12 | 532 15 97-37 | Folie | | 1 |
| 13 | 532 18 04-35 | Folie | | 1 |
| 14 | 532 15 97-36 | Folie | | 1 |
| 17 | 532 14 08-37 | Folie | | 1 |
| 18 | 532 17 05-65 | Folie | | 1 |
| 19 | 532 17 06-54 | Folie | | 1 |
| 21 | 532 16 62-86 | Folie | | 1 |
| -- | 532 13 83-11 | Folie | | 1 |
| -- | 532 18 26-21 | Folie | | 1 |
| -- | 532 18 10-91 | PLATTE | | 1 |
| -- | 532 18 10-90 | PLATTE | | 1 |
| -- | 532 18 22-33 | | | 1 |
| -- | 532 18 22-34 | | | 1 |

REPAIR PARTS

TRACTOR- -MODEL NO. ICT14 (JICT14C) PRODUCT NO. 954 13 00-79

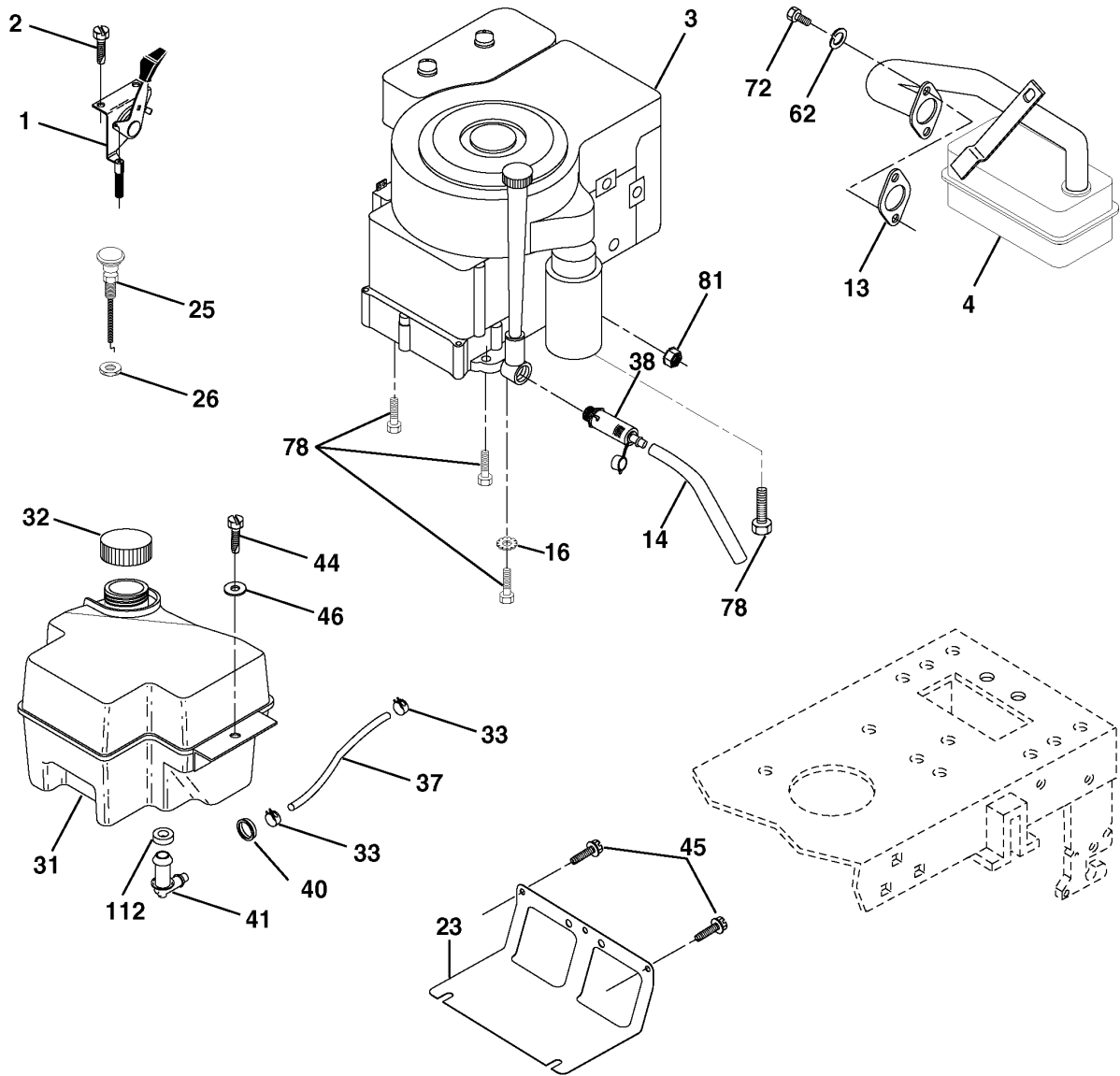
WHEELS & TIRES



| Referenz | Teile Nr | Beschreibung | Bemerkung: | ANZ KIT |
|----------|--------------|--------------|------------|---------|
| 1 | 532 05 91-92 | CAP VALVE | | 1 |
| 2 | 532 06 51-39 | NIPPEL | | 1 |
| 3 | 532 10 62-22 | REIFEN | | 1 |
| 4 | 532 05 99-04 | SCHLAUCH | | 1 |
| 5 | 532 13 83-36 | FELGE | | 1 |
| 6 | 532 12 49-57 | NIPPEL | | 1 |
| 7 | 532 12 49-59 | LAGER | | 1 |
| 8 | 532 13 83-37 | RINGRITZEL | | 1 |
| 9 | 532 12 46-35 | REIFEN | | 1 |
| 10 | 532 12 49-26 | SCHLAUCH | | 1 |
| 11 | 532 17 50-39 | RADKAPPE | | 1 |
| -- | 532 14 43-34 | SEALING FOAM | | 1 |

REPAIR PARTS

TRACTOR- -MODEL NO. ICT14 (JICT14C) PRODUCT NO. 954 13 00-79
ENGINE



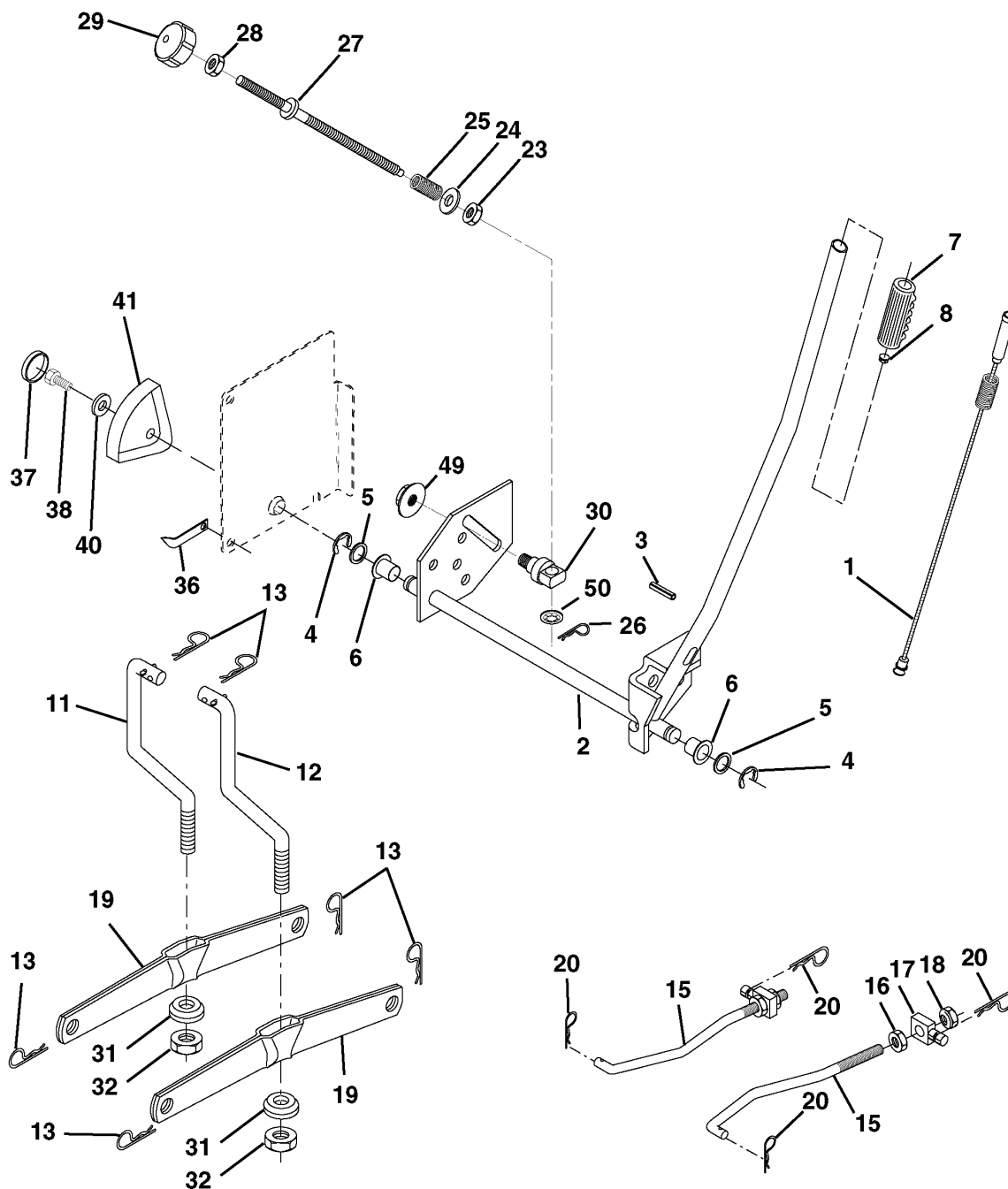
29

OPTIONAL EQUIPMENT
Spark Arrester

| Referenz | Teile Nr | Beschreibung | Bemerkung: | ANZ KIT |
|----------|--------------|--------------------|------------|---------|
| 1 | 532 17 05-51 | DROSSELREGELUNG | | 1 |
| 2 | 817 72 04-08 | SCHRAUBE | | 1 |
| 4 | 532 13 73-52 | SCHALLDÄMPFER | | 1 |
| 13 | 532 16 52-91 | DICHTUNG | | 1 |
| 14 | 532 14 84-56 | ROHR | | 1 |
| 16 | 811 05 06-00 | SCHEIBE | | 1 |
| 23 | 532 16 98-37 | SCHUTZ | | 1 |
| 25 | 532 18 09-45 | CHOKEHEBEL | | 1 |
| 26 | 873 92 06-00 | MUTTER | | 1 |
| 29 | 532 13 71-80 | SPARK ARRESTER KIT | | 1 |
| 31 | 532 18 06-45 | KRAFTSTOFFTANK | | 1 |
| 32 | 532 14 05-27 | FUEL CAP | | 1 |
| 33 | 532 12 34-87 | SCHLAUCHSCHELLE | | 1 |
| 37 | 532 13 70-40 | SCHLAUCH | | 1 |
| 38 | 532 14 83-15 | STOPFEN | | 1 |
| 40 | 532 12 40-28 | BUSHING | | 1 |
| 41 | 532 13 92-77 | NIPPEL | | 1 |
| 44 | 817 67 04-12 | SCHRAUBE | | 1 |
| 45 | 817 00 06-12 | SCHRAUBE | | 1 |
| 46 | 819 09 14-16 | SCHEIBE | | 1 |
| 62 | 810 04 05-00 | SCHEIBE | | 1 |
| 72 | 871 07 05-12 | BOLZEN | | 1 |
| 78 | 817 06 06-20 | SCHRAUBE | | 1 |
| 81 | 873 51 04-00 | MUTTER | | 1 |
| 112 | 532 12 49-52 | BUSHING | | 1 |

REPAIR PARTS

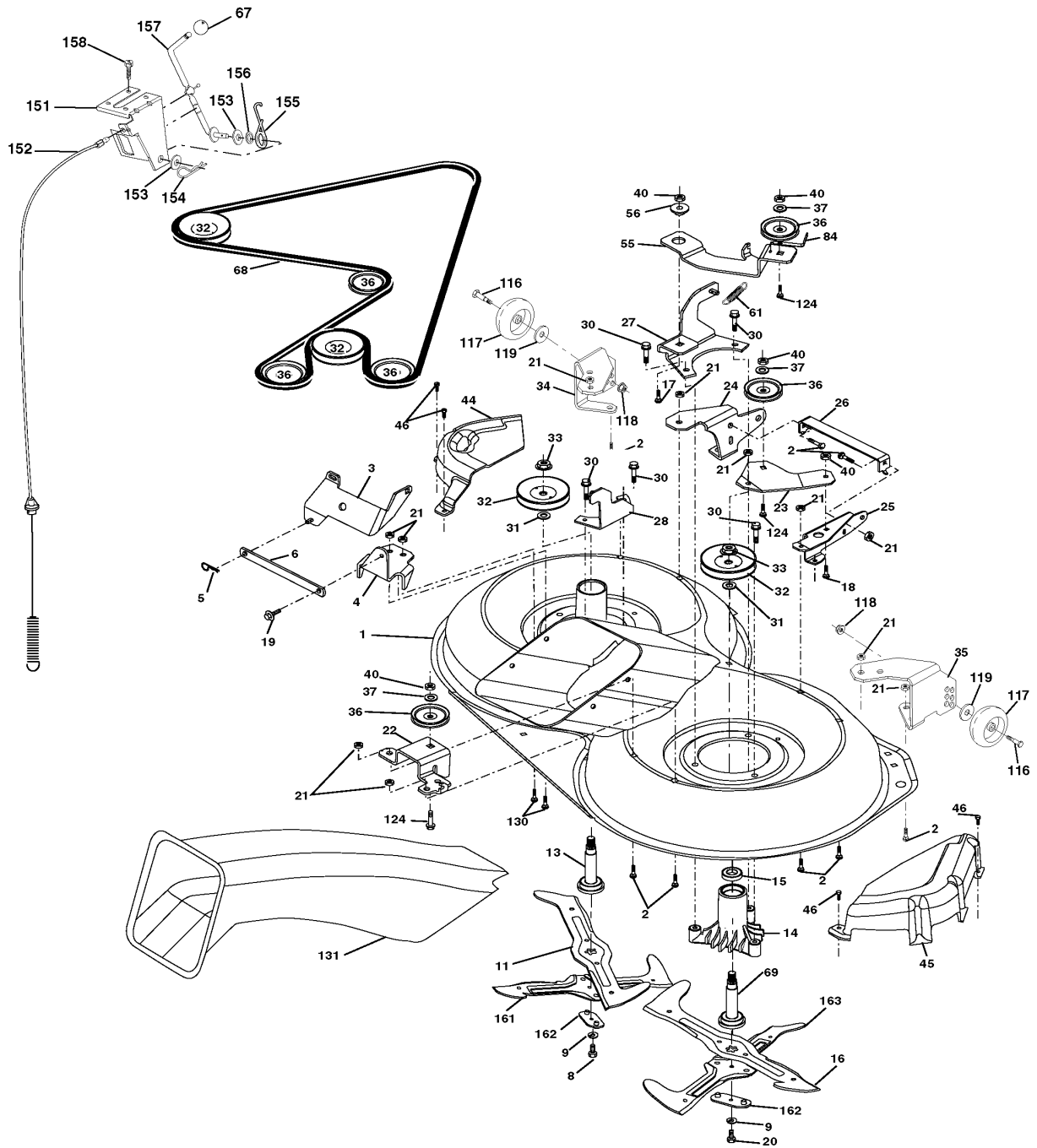
TRACTOR- -MODEL NO. ICT14 (JICT14C) PRODUCT NO. 954 13 00-79
MOWER LIFT



| Referenz | Teile Nr | Beschreibung | Bemerkung: | ANZ KIT |
|----------|--------------|---------------------|------------|---------|
| 1 | 532 15 94-60 | KABEL | | 1 |
| 2 | 532 15 94-71 | HEBEL | | 1 |
| 3 | 532 10 57-67 | PIN RETAINING SCREW | | 1 |
| 4 | 812 00 00-02 | RETAINING RING | | 1 |
| 5 | 819 21 16-21 | SCHEIBE | | 1 |
| 6 | 532 12 01-83 | LAGER | | 1 |
| 7 | 532 12 56-31 | EINSTELLHEBEL | | 1 |
| 8 | 532 12 45-26 | KNOPF | | 1 |
| 11 | 532 16 58-29 | STANGE | | 1 |
| 12 | 532 16 58-31 | STANGE | | 1 |
| 13 | 532 12 46-70 | RETAINING RING | | 1 |
| 15 | 532 17 32-88 | GELENK | | 1 |
| 16 | 873 35 08-00 | MUTTER | | 1 |
| 17 | 532 17 56-89 | HALTER | | 1 |
| 18 | 873 80 08-00 | MUTTER | | 1 |
| 19 | 532 13 98-68 | HEBEL | | 1 |
| 20 | 532 16 35-52 | KLAMMER | | 1 |
| 23 | 532 11 08-07 | MUTTER | | 1 |
| 24 | 819 13 10-16 | SCHEIBE | | 1 |
| 25 | 532 12 48-74 | FEDER | | 1 |
| 26 | 532 16 94-84 | BOLZEN | | 1 |
| 27 | 532 12 69-71 | HEBEL | | 1 |
| 28 | 873 35 06-00 | MUTTER | | 1 |
| 29 | 532 13 80-57 | KNOPF | | 1 |
| 30 | 532 15 02-33 | TRUNNION | | 1 |
| 31 | 532 16 98-65 | LAGER | | 1 |
| 32 | 873 54 06-00 | MUTTER | | 1 |
| 36 | 532 15 50-97 | INDIKATOR | | 1 |
| 37 | 532 12 39-35 | STOPFEN | | 1 |
| 38 | 817 06 05-16 | SCHRAUBE | | 1 |
| 40 | 819 11 24-10 | SCHEIBE | | 1 |
| 41 | 532 12 39-34 | INDIKATOR | | 1 |
| 49 | 532 14 52-12 | MUTTER | | 1 |
| 50 | 532 11 04-52 | MUTTER | | 1 |

REPAIR PARTS

TRACTOR- -MODEL NO. ICT14 (JICT14C) PRODUCT NO. 954 13 00-79
MOWER



| Referenz | Teile Nr | Beschreibung | Bemerkung: | ANZ KIT |
|----------|--------------|---------------------|------------|---------|
| 1 | 532 16 55-52 | GEHÄUSE | | 1 |
| 2 | 872 14 05-06 | BOLZEN | | 1 |
| 3 | 532 16 55-69 | HALTER | | 1 |
| 4 | 532 16 55-58 | HALTER | | 1 |
| 5 | 532 12 46-70 | RETAINING RING | | 1 |
| 6 | 532 16 55-57 | STANGE | | 1 |
| 8 | 532 18 17-12 | BOLZEN | | 1 |
| 9 | 810 03 06-00 | SCHEIBE | | 1 |
| 11 | 532 17 00-37 | MESSER | | 1 |
| 13 | 532 13 76-45 | WELLE | | 1 |
| 14 | 532 12 87-74 | LAGERGEHÄUSE | | 1 |
| 15 | 532 11 04-85 | LAGER | | 1 |
| 16 | 532 17 00-38 | MESSER | | 1 |
| 17 | 872 14 06-10 | BOLZEN | | 1 |
| 18 | 872 11 06-08 | BOLZEN | | 1 |
| 19 | 532 13 28-27 | SPEC. BOLT | | 1 |
| 20 | 532 18 17-13 | BOLZEN | | 1 |
| 21 | 873 68 05-00 | MUTTER | | 1 |
| 22 | 532 16 52-43 | HALTER | | 1 |
| 23 | 532 16 54-46 | PLATTE | | 1 |
| 24 | 532 16 52-42 | HALTER | | 1 |
| 25 | 532 16 52-44 | HALTER | | 1 |
| 26 | 532 16 52-37 | STANGE | | 1 |
| 27 | 532 16 55-68 | HALTER | | 1 |
| 28 | 532 16 55-67 | HALTER | | 1 |
| 30 | 532 17 39-84 | SCHRAUBE | | 1 |
| 31 | 532 12 99-63 | SCHEIBE | | 1 |
| 32 | 532 15 35-31 | RIEMENSCHLEIBE | | 1 |
| 33 | 532 17 83-42 | MUTTER | | 1 |
| 34 | 532 16 52-39 | HALTER | | 1 |
| 35 | 532 16 52-38 | HALTER | | 1 |
| 36 | 532 14 67-63 | RIEMENSCHLEIBE | | 1 |
| 37 | 819 13 13-16 | SCHEIBE | | 1 |
| 40 | 873 68 06-00 | MUTTER | | 1 |
| 44 | 532 17 55-38 | DECKEL | | 1 |
| 45 | 532 17 55-39 | DECKEL | | 1 |
| 46 | 532 13 77-29 | SCHRAUBE | | 1 |
| 55 | 532 16 54-45 | HEBEL | | 1 |
| 56 | 532 16 57-23 | ABSTANDSSCHLEIBE | | 1 |
| 61 | 532 16 59-45 | FEDER | | 1 |
| 67 | 532 10 69-32 | KNOPF | | 1 |
| 68 | 532 18 02-17 | RIEMEN | | 1 |
| 69 | 532 16 54-82 | WELLE | | 1 |
| 84 | 532 15 60-85 | RIEMENFÜHRUNG | | 1 |
| 116 | 532 13 76-44 | SCHRAUBE | | 1 |
| 117 | 532 13 39-57 | LAUFRAD | | 1 |
| 118 | 873 93 06-00 | MUTTER | | 1 |
| 119 | 819 12 14-14 | SCHEIBE | | 1 |
| 124 | 872 11 06-12 | BOLZEN | | 1 |
| 130 | 872 11 05-06 | BOLZEN | | 1 |
| 131 | 532 16 56-61 | ROHR | | 1 |
| 151 | 532 16 96-70 | HALTER | | 1 |
| 152 | 532 17 60-74 | KABEL | | 1 |
| 153 | 532 16 96-74 | SCHEIBE | | 1 |
| 154 | 532 16 96-75 | PIN RETAINING SCREW | | 1 |
| 155 | 532 16 96-71 | FEDER | | 1 |
| 156 | 532 16 96-72 | ABSTANDSSCHLEIBE | | 1 |
| 157 | 532 16 96-69 | BEDIENELEMENT | | 1 |
| 158 | 817 72 04-08 | SCHRAUBE | | 1 |
| 161 | 532 18 04-18 | MESSER | | 1 |
| 162 | 532 18 04-20 | ADAPTER | | 1 |
| 163 | 532 18 04-19 | MESSER | | 1 |
| -- | 532 18 18-57 | LAGERGEHÄUSE | | 1 |
| -- | 532 18 18-58 | LAGERGEHÄUSE | | 1 |
| -- | 532 18 17-65 | GEHÄUSE | | 1 |